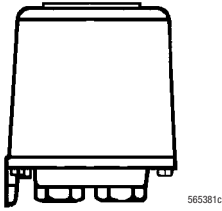


Dimensions in mm

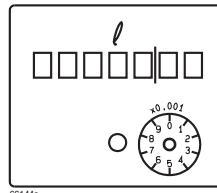


height = 79
width = 65
depth = 65

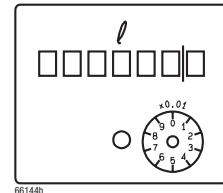
Detailed dimensional drawings in chapter 5

Dial

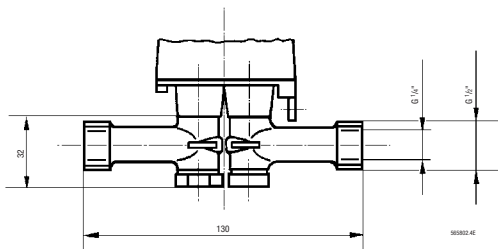
VZO 4



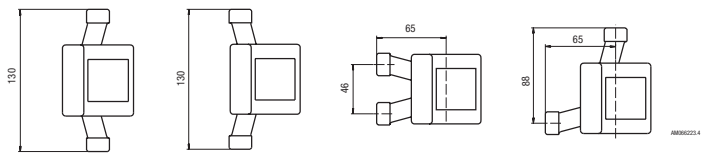
VZO 8



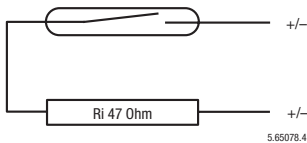
Mounting Kit for VZO 8



Order No. 81130: some possible mounting positions



RE Pulsers



Switching element:
Switching voltage:
Switching current:
Static current:
Switching power:
ON-time:
Temperature:
Protection:
Connection:

- Reed switch with dry contact (inert gas)
- Max. 48 V AC/DC
- Max. 50 mA
- Open Contact
- Max. 3 VA
- 30 ... 70% (pulse value 1/0, 1/0,01 I/pulse)
- 20 ... 35% (pulse value 0,00125/0,00311 I/pulse0)
- Ambient -10 ... +60 °C
- IP 65 (IEC 144) against water-jets and dust
- On plug supplied with product for cable, 2 x 0,35 mm²

Ordering specifications

Type	Order No.	Type	Order No.
VZO 4	92680	VZO 8	92630
VZO 4 RE 0,00125	89763	VZO 8 RE 0,00311	89733
VZO 4 RE 0,01	89760	VZO 8 RE 0,1	89730
VZO 4 RE 0,1	89761	VZO 8 RE 1	89731
VZO 4 Q _{min} 0,5	92678		

2. VZO 4 ... 50 (Classic)

2.1

VZO 4 and 8

Technical data ¹⁾



- oil meter with inside thread connections located on the bottom plate
- with mechanical roller counter, volume display in litres
- meters in US-Gallons ²⁾
- for mounting in horizontal, vertical an inclined positions

Option: Reed pulser 48 V

Type		VZO 4 Q _{min} 0,5	VZO 4	VZO 8	
Nominal diameter	mm	4	4	8	
	inch	1/8	1/8	1/4	
Connection threads of meter		inch	1/8	1/4	
Nominal pressure		bar	25		
Temperature		°C	60		
Maximum flow rate	Q _{max} ³⁾	l/h	40	80	200
Nominal flow rate	Q_n ³⁾	l/h	25	50	135
Minimal flow rate	Q _{min} ⁴⁾	l/h	0,5	1	4
Approx. starting flow rate		l/h	0,3	0,4	1,6
Measurement error limit			± 1% of actual value ⁴⁾		
Repeatability			± 0,2%		
Smallest readable amount	l		0,001	0,001	0,01
Registration capacity	m ³		100	100	1000
Registration at Q _n before return to zero	h		4 000	2 000	7 400
Safety filter mesh width	mm		0,125	0,125	0,150
Dirt trap mesh width	mm		0,080	0,080	0,100
Volume of the measuring chamber	approx. cm ³		5	5	12,5
Weight without couplings	approx. kg		0,65	0,65	0,75
Reed pulsers	RE 1 RE 0,1 RE 0,01 RE 0,00125 RE 0,00311	l/pulse	–	– 0,1 0,01 0,00125 –	1 0,1 – – 0,00311
Pulse frequency for	RE 0,00125 ⁵⁾	at Q _{max} at Q _{min}	Hz	– 17,777	– –
Pulse frequency for	RE 0,00311 ⁵⁾	at Q _{max} at Q _{min}	Hz	– –	17,864 0,357

1) Manufacturer's specification, valid for the reference condition as specified under meter data (annex).

2) 1 US gallon corresponds to 3.785 litres

3) For burners and engines or motors, the meter must basically be selected for permanent flow. For higher viscosity, or if the meter is installed on the suction side, the pressure drop and any reduction in the measuring range must also be considered; see Chapters 5 and 8.

4) Accuracy limits: VZO 4 Q_{min} 0,5: 0,5 l/h ... 2 l/h = + 1%/- 2%. VZO 4: 1 l/h ... 2 l/h = + 1%/- 2%.

5) Brief intervals when switched on have to be considered.

Pressure drop curves

in chapter 5