



## Refuelling & Liquid Transfer Equipment



Everything you need for refuelling and liquid transfer – all in one place.

From portable refuelling kits and drum-mounted dispensers to fully pumped fuel transfer stations, we stock all the essential components.

Sourced from the world's leading manufacturers and trusted by professionals across the UK.

Here in **Westbury, Wiltshire**, we have made the Atkinson Tankmaster in our machine shop since the late 1960s. In fact we started off as an engineering organisation and the late Mr Atkinson developed the **Tankmaster** for his own oil tank that was stored in the loft so that he could keep an eye on the amount of oil that he required for the engineering business. It was an oil delivery company owner that spotted the potential when he came in one day to top up the oil tank.

When he saw it attached to the tank he enquired as to what the device was and when told about it he responded with "If you can make those for me then I can sell them for you". The rest is history. The Tankmaster became **'THE'** appliance of choice for monitoring the contents of oil tanks around the country.

Throughout the past 60 years, we've earned a solid reputation for delivering high-quality products, maintaining exceptional stock levels, and providing reliable customer service that our clients can count on.

## THE ATKINSON GROUP

Atkinson Equipment are the parent company of a group of companies.

The logo for Atkinson Engineering, featuring the word "Atkinson" in a bold, green, sans-serif font above the word "ENGINEERING" in a smaller, black, sans-serif font. A small Union Jack flag is positioned to the left of the text.

Atkinson Engineering

The logo for Taylor Davis, featuring a stylized, brown, four-lobed circular emblem above the name "Taylor Davis" in a bold, black, sans-serif font. Below the name is the tagline "...not just ANY packaging company!" in a smaller, italicized font.

Taylor Davis Ltd

The logo for Patrico Ltd, featuring the name "Patrico Ltd" in a bold, black, sans-serif font. The letter "i" in "Patrico" has a small blue dot.

Patrico Ltd

The logo for Avery Knight & Bowlers, featuring the letters "AKB" in a bold, black, sans-serif font. The letter "A" is stylized with a diagonal line through it.

Avery Knight & Bowlers

The logo for Graham Tyson, featuring a stylized blue and white cross-like emblem to the left of the name "Graham Tyson" in a bold, blue, sans-serif font. Below the name is the tagline "A Division of Taylor Davis Ltd" in a smaller font.

Graham Tyson

The logo for Sema Sprayers, featuring a black square with a white dot inside, followed by the name "sema" in a bold, black, sans-serif font. Below the name is the tagline "A division of Taylor Davis Ltd" and the word "sprayers" in a smaller, red, sans-serif font.

Sema Sprayers

The logo for Richmond Precision Services, featuring the name "RICHMOND" in a bold, black, sans-serif font above the words "PRECISION SERVICES" in a blue, sans-serif font.

Richmond Precision Services

## DISTRIBUTORS

The logo for Husky, featuring a stylized red and black husky head profile to the left of the name "Husky" in a bold, red, sans-serif font.The logo for Gilbarco Veeder-Root, featuring a stylized green and red circular emblem to the left of the name "GILBARCO VEEDER-ROOT" in a bold, black, sans-serif font.The logo for FEL Valves, featuring a stylized green and yellow geometric emblem to the left of the name "FEL Valves" in a bold, black, sans-serif font.The logo for Inpro, featuring a stylized blue and orange geometric emblem to the left of the name "inpro" in a bold, black, sans-serif font. Below the name is the tagline "research + development" in a smaller font.The logo for Kolor Kut, featuring the name "KOLOR KUT" in a bold, red, sans-serif font. Below the name is the tagline "WATER FINDING PASTE" in a smaller font.The logo for Aqua Metro, featuring the name "aqua metro" in a bold, black, sans-serif font. Below the name is a stylized blue and yellow wave graphic.The logo for Piusi, featuring the name "PIUSI" in a bold, black, sans-serif font. The letter "I" is stylized with a red dot.The logo for Goldenrod, featuring the name "GOLDENROD" in a bold, black, sans-serif font. The text is enclosed in a yellow rectangular box with a black border.The logo for Fuelstop, featuring a stylized orange and red gear-like emblem to the left of the name "FUELSTOP" in a bold, black, sans-serif font. Below the name is the tagline "THERMOSTATIC FIRE VALVE" in a smaller font.The logo for Groz, featuring a stylized orange and yellow geometric emblem to the left of the name "GROZ" in a bold, black, sans-serif font.The logo for FAG, featuring the name "FAG" in a bold, green, sans-serif font.The logo for Watts, featuring the name "WATTS" in a bold, black, sans-serif font. The text is preceded by a stylized blue and white wave graphic.

OFFICIAL UK DISTRIBUTOR FOR:

The logo for SPX Flow, featuring the name "SPXFLOW" in a bold, black, sans-serif font. The letter "X" is stylized with a green dot.The logo for GPI, featuring the letters "GPI" in a bold, blue, sans-serif font. The letter "I" is stylized with a blue dot.The logo for FMT Swiss AG, featuring the letters "FMT" in a bold, black, sans-serif font. To the right of the letters is a small red square. Below the letters is the text "Swiss AG" in a smaller font.



PHONE - 01373 822220



EMAIL - sales@atkinsonequipment.com

Have an account with us? Please note minimum order value of £30 net goods when using credit account

STANDARD 2/3 DAY DELIVERY	PALLET ORDERS	OVER £750	OVER £450	OVER £360	UNDER £360
MAINLAND UK	P.O.A	-	-	<b>FREE</b>	£12.75
SCOTTISH HIGHLANDS & ISLANDS	P.O.A	-	<b>FREE</b>	£21.50	£28.00
CHANNEL ISLANDS	P.O.A	-	-	£26.00	£30.00
NORTHERN IRELAND	P.O.A	<b>FREE</b>	-	£27.00	£32.00
SOUTHERN IRELAND	P.O.A	<b>FREE</b>	-	£29.00	£36.50

#### NEXT DAY SERVICES - MAINLAND UK ONLY

BEFORE 9:30AM	<b>£35.00</b>
BEFORE 10:30AM	<b>£30.00</b>
BEFORE 12:30PM	<b>£20.00</b>
SATURDAY DELIVERY	<b>£50.00</b>
PALLET RATE	<b>P.O.A</b>

#### ROYAL MAIL - UP TO 2KG - UK MAINLAND

1ST CLASS POST - 0-1KG	<b>£5.25</b>
1ST CLASS POST - 1-2KG	<b>£8.25</b>

#### OTHER

AIRFREIGHT - SPECIAL ORDER	<b>P.O.A</b>
COLLECTION - CONTACT US TO ARRANGE	<b>FREE</b>

Orders can be placed until 2pm Monday - Friday for same day despatch on off the shelf items.

**Please note:** Pallets may have an earlier cut off time.

## Returns

- Call or email us to obtain a returns reference number, this will need to be marked on the outside of the box.
- Carriage cost to return the item will be paid by the sender. We can arrange a collection but you will be charged.
- Refund will be for the product cost only, not including any carriage charge on original purchase.
- Goods must be returned within 14 days to receive a full refund, after this time we reserve the right to charge a 20% restocking fee.
- All of the above will only be valid if the item is returned unused, in it's original packaging and in a resaleable condition.
- Faulty goods will be returned to us, inspected and either repaired, replaced or credited at our discretion.
- Items which are built or manufactured to order, bespoke, or imported specifically at customer's request; Cancellations, may not be subject to a refund or only a partial refund may be applicable.

## Quality

It is the policy of these Atkinson Group Companies to be totally committed to ensuring that customers and clients receive optimum quality products together with the highest possible levels of service.



Fuel Dispensing Nozzles / Nozzle Accessories	3-5
Hose Fittings & Accessories (Swivel Joints, Non Return Valves, Cam & Groove Couplings, Timers & Switches)	5-7
Diesel Dispensing Hose Kits	8-9
Fuel Dispensing Hose	9-10
Fuel Hose Reels	11-12
Fluid Flow Meters	12-13
GPI/FLOMEC Flow Meters	13-17
Hand Pumps / Drum Pumps / Chemical Pumps	18-19
GPI/GPRO Transfer Pumps & Kits / Accessories	20-22
FMT Swiss AG Transfer Pumps	23
Piusi Equipment	24-25
Transfer Pump Kits	26
Diesel Management Systems	27
Water Transfer Pumps / Submersible Pumps	28-30
Fuel Filters & Elements	31-32
FMT Pump Spares	33
GPI Flow Meter Spares & Accessories	34-35
AdBlue Equipment	36-41
Pipe & Miscellaneous Fittings	5-7

## Services

With more than 60 years of experience, Atkinson Equipment provides a comprehensive range of services. Our services include bespoke equipment design, marketing support, onsite testing, export services, and more.



### Bespoke Equipment

We collaborate closely with you to craft and construct a customised kit precisely tailored to your specifications.



### Stockholding

We have a large stockholding facility that allows us to offer next-day delivery for orders. Additionally, we can accommodate call-off orders for larger supply needs.



### Marketing Support

We provide promotional literature, including flyers with your logo, to support your sales and marketing efforts.



### Export Services

We manage international export procedures and logistics for clients requiring global distribution.



### Onsite Testing Facilities

Our onsite testing facilities ensure the reliability and performance of our equipment in real world conditions.



### Expert Sales Advice

Our dedicated in-house technical team provide support to our customers, utilising our expertise to assist with installation and servicing needs.



**MANUAL NOZZLES** - Manual dispensing nozzles are recognised for their efficiency, low flow rates, simplicity to use and their low price. They can be used on many fuel transfer systems, mainly those that are gravity fed. See our range of manual nozzles with various connection sizes and applications.

### 3/4" ADBLUE NOZZLE

Suitable for use with AdBlue. Plastic Polypropylene bodied manual nozzle with stainless steel spout. 3/4" Hose-tail connection and viton seals to protect against aggressive fluids.

PART NUMBER	DESCRIPTION	TRADE PRICE
TN6000-AB	Manual 3/4" AdBlue Nozzle	£43.00



### 1" BSPF SELF 3000 NOZZLE

Suitable for use with both petroleum and diesel and comes complete with a swivel as standard. Available with either 1" female swivel inlet and 1" OD spout; or 3/4" female swivel inlet and 1" OD spout. Viton Seals.

PART NUMBER	DESCRIPTION	TRADE PRICE
P8-F0065000A	Self 3000 1" BSPF Swivel, 1" OD Spout	£47.10
P8-00065001A	Self 3000 3/4" BSPF Swivel, 1" OD Spout	£49.10



### 1" BSPF SELF 2000 NOZZLE

Suitable for use with both petroleum and diesel and comes complete with a swivel as standard. Available with either 1" female swivel inlet and 1" OD spout; or 3/4" female swivel inlet and 1" OD spout. NBR Seals.

PART NUMBER	DESCRIPTION	TRADE PRICE
TN6000	Self 2000 1" BSPF Swivel, 1" OD Spout	£19.98
TN6000-1	Self 2000 3/4" BSPF Swivel, 1" OD Spout	£19.98



**AUTOMATIC NOZZLES** - Automatic dispensing nozzles are equipped with a device that automatically shuts off the flow when the tank is full. These are mainly used on pumped fuel transfer systems. Various flow rates available to suit most applications on or off a forecourt.

### 3/4" NPT GPI PETROL NOZZLE

Great Plains Industries automatic nozzle. Comes with straight spout and 3/4 inch NPT inlet for unleaded fuel. Approved for use with GPI pumps and kits.

PART NUMBER	DESCRIPTION	TRADE PRICE
GP110121-8	GPI 3/4" NPT Petrol Automatic Nozzle	£107.00



### 3/4" BSPF ADBLUE NOZZLE

100% compatible with Adblue. Stainless steel body and spout, with a max flow rate of 40lpm. Also can be used with solvents and corrosive mediums.

PART NUMBER	DESCRIPTION	TRADE PRICE
M3700-ABSS	AdBlue 3/4" BSPF Stainless Steel Nozzle	£210.00



### 3/4" BSPF HUSKY X-MATE NOZZLE

Automatic diesel nozzle with a maximum flow rate of 60lpm and 3/4" BSPF inlet. Reinforced spout bushing & sensing port behind spout to prevent wear.

PART NUMBER	DESCRIPTION	TRADE PRICE
M3701	Husky X-Mate 3/4" Diesel Nozzle	£270.00



# FUEL DISPENSING NOZZLES

## 1" BSPF TDW-11A NOZZLE

Suitable for diesel. 1" BSP Female Swivel inlet. 1" OD Spout. Comes complete with Swivel as standard (various material resistant to oil/diesel). Cannot be used on a gravity feed system, requires a pumped system.

PART NUMBER	DESCRIPTION	TRADE PRICE
M3700-SS	1" BSPF Swivel, 1" OD Spout Automatic Diesel Nozzle - 60lpm	£56.50



## 1" BSPF HUSKY 1GS NOZZLE

Suitable for diesel. 1" BSP Female Swivel inlet. 28.5mm OD Spout. Sensing port behind spout to prevent click offs. Anti-air lock feature for easy priming of pump.

PART NUMBER	DESCRIPTION	TRADE PRICE
M3700	Husky 1" BSPF Swivel, 1" OD Spout Automatic Diesel Nozzle - 100lpm	£228.00



## 1" BSPF HUSKY VIII HIGH FLOW NOZZLE

Suitable for diesel. 1" BSPF, maximum flow rate 250lpm. Durable die cast aluminium body with full scuff guard Spout bushing & sensing port behind spout.

PART NUMBER	DESCRIPTION	TRADE PRICE
M3711	Husky 1" BSPF, 35mm OD Spout Automatic HS Diesel Nozzle - 250lpm	£440.00
M3711-SW	Husky 1" BSPF Swivel, 35mm OD Spout Automatic High Speed Diesel Nozzle - 170lpm	£405.00



## 1" BSPF ZVA SLIMLINE NOZZLE

Suitable for diesel and petrol. Due to their slimline spout, these diesel and petrol nozzles are ideal for both domestic and commercial vehicle refuelling at a maximum flow rate of 80lpm

PART NUMBER	DESCRIPTION	TRADE PRICE
M3702-4.1H	ZVA 1" BSPF, 24.5mm OD Spout Automatic Fuel Nozzle - 80lpm	£285.00



## 1" BSPF ZVA 25 HIGH FLOW NOZZLE

Suitable for diesel and petrol and biodiesel upto B5. 1" BSPF, Supplied with 1" F BSP Swivel, ATEX, EN13012 and TUV-SUD Approved.

PART NUMBER	DESCRIPTION	TRADE PRICE
M3702-25.4.1	ZVA 1" BSPF, High Flow Automatic Fuel Nozzle - 140lpm	£465.00



## 1.5" BSPF ZVA 32 SUPER HIGH FLOW NOZZLE

Suitable for diesel and petrol. 1.5" BSPF, supplied with 1 1/2" BSPF swivel. Max flow rate: 200lpm. 2 position stay open latch, ATEX, EN13012 and TUV-SUD approved.

PART NUMBER	DESCRIPTION	TRADE PRICE
M3702-32	ZVA 1.5" BSPF, Super High Flow Automatic Fuel Nozzle - 200lpm	£845.00



## 1.5" BSPF HUSKY 1690 HIGH FLOW NOZZLE

Suitable for diesel. 1.5" BSPF, specially designed for heavy duty applications including rail, tanker or filling fuel storage tanks.

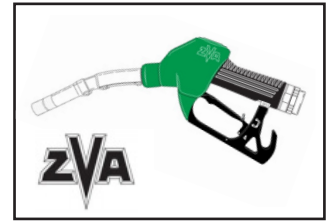
PART NUMBER	DESCRIPTION	TRADE PRICE
M3715	Husky 1.5" BSPF, 35mm OD Spout Heavy Duty Nozzle - 375lpm	POA



## 1" BSPF ZVA SLIMLINE PETROL NOZZLE

Suitable for gasoline (also with ethanol content up to E 85), diesel, fuel oil, biodiesel. Not suitable for viscous oils Due to their slimline spout, these diesel and petrol nozzles are ideal for both domestic and commercial vehicle refuelling at a maximum flow rate of 80lpm.

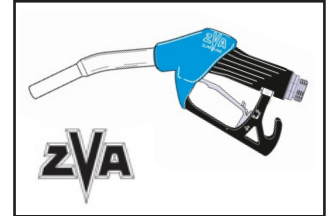
PART NUMBER	DESCRIPTION	TRADE PRICE
ZVA4.1R	GREEN, Unleaded petrol nozzle with green cover - 1" BSPF / 80lpm	£289.00



## 1" BSPM ZVA ADBLUE NOZZLE - COMMERIAL

Suitable for diesel and petrol and biodiesel upto B5. 1" BSPF, Supplied with 1" F BSP Swivel, ATEX, EN13012 and TUV-SUD Approved.

PART NUMBER	DESCRIPTION	TRADE PRICE
ZVAADB 4.0	ZVAADB 4.0 BLUE, Adblue nozzle with SS spout, commercial - 1" BSPM / 40lpm	£980.00



## 1" BSPM ZVA ADBLUE NOZZLE - FOR CARS

Automatic nozzle for Light Vehicle AdBlue® urea solution. 1" BSP male Swivel with integrated Volume Flow Switch. Max. flowrate 10 l/min., recommended flow rate at service stations 4-5 l/min.

PART NUMBER	DESCRIPTION	TRADE PRICE
ZVAALV3M.0	ZVAALV3M.0 CAR, Adblue nozzle with composite spout - 1" BSPM / 10lpm	£1,160.00



## SWIVELS & HOSE TAILS

### 1" BREAKAWAY STAINLESS STEEL COUPLING

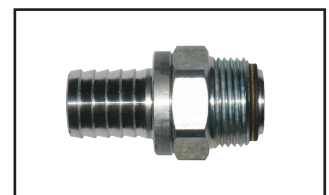
This breakaway swivel joint, made from stainless steel, is suitable for use with adblue. This has 3/4" Inlet connects to gun, 1" outlet connects to hose. Reusable.

PART NUMBER	DESCRIPTION	TRADE PRICE
M3700-ABSS-BR1BSP	Nozzle Holster for a Various Range of Nozzles	£91.75



### SWIVEL TAILS

PART NUMBER	DESCRIPTION	TRADE PRICE
GFH2400	1" BSPM Swivel Hose Tail for 25mm Hose Barb - Tapered	£25.50
M3700-ABSS-SW07TAIL	3/4" BSPM Stainless Steel (316) Swivel Hose Tail for 19mm Hose Barb	£23.40



### SWIVEL JOINTS

These are often fitted between the end of the hose and the nozzle so that it can be twisted around to the correct orientation.

PART NUMBER	DESCRIPTION	TRADE PRICE
GFH3475-34-34	3/4" BSPM X 3/4" BSPF Swivel Joint	£16.85
GFH3475-34	3/4" BSPM x 1" BSPF Swivel Joint	£12.95
GFH3475	1" BSPM x 1" BSPF Swivel Joint	£12.95
GFH3475-SS	1" BSPM x 1" BSPF Stainless Steel (316) Swivel Joint	£98.40



# SWIVELS & HOSE TAILS / HOSE FITTINGS

## FIXED HOSE TAILS

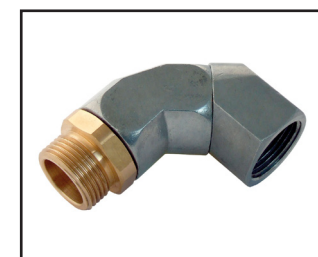
PART NUMBER	DESCRIPTION	TRADE PRICE
GFH3390	3/4" BSPM Fixed Hose Tail to suit 25mm ID Hose	£8.35
GFH3400	3/4" BSPM Fixed Hose Tail to suit 19mm ID Hose	£5.10
GFH3400-SS	3/4" BSPM Stainless Steel Fixed Hose Tail to suit 19mm ID Hose	£8.55



GFH3440	1" BSPM Fixed Hose Tail to suit 25mm ID Hose	£10.35
GFH3445	1" BSPT Fixed Hose Tail for 1" ID Hose - Aluminium	£8.25
GFH3380	1" BSPM Fixed Hose Tail to suit 19mm ID Hose	£8.25
GFH3380T	1" BSPTM Fixed Hose Tail to suit 19mm ID hose	£7.00
GFH3407	2" BSPT * 2" Hosetail BZP & Colour Pass MH-32/32	£36.25

## SWIVEL ELBOWS

PART NUMBER	DESCRIPTION	TRADE PRICE
GFH3475-90	1" BSP M/F Swivel Elbow MD-45A 90 Degree	£22.00
GFH3476-90	3/4" BSPM - 1" BSP 90 Degree Swivel	£22.00
GFH3525	1" M & 1" F BSP Elbow (G2-1-BK) BS1256 BMFL-16	£5.50



## Y STRAINER

Brass body with 500 micron stainless strainer element. 1" size available

PART NUMBER	DESCRIPTION	TRADE PRICE
M5056	1" Brass Y Strainer - F/F	£12.45



## NON-RETURN VALVES

Non-Return Valves are fitted in the end of the fuel line to prevent fuel running back out of the hose line. These are essential for use where the pump requires an initial prime to get it working and you wish to maintain the prime thereafter.

All threads are BSP and the flow direction is either Female In and Female Out or Male In and Female Out,

Sizes available from 3/8" to 2" with Female to Female ports and 1/2" to 2" with Male to Female ports.



PART NUMBER	DESCRIPTION	TRADE PRICE
GV3930	3/8" Non-Return Valve	£8.05
GV3932	1/2" BSP F/F Non-Return Valve	£7.50
GV3934-FO	3/4" Strainer Only	£5.40
GV3935	1" BSP F/F Non-Return Valve	£13.50
GV3910-F	1" Strainer Only	£3.20
GV3975	2" BSPM Parallel x 2" Male Taper	POA
GV3934-SS	Non Return Valve 3/4" Stainless Steel	£56.00
GV3934	3/4" BSP F/F Non Return Valve	POA

## TIMERS, SWITCHES & CONNECTORS

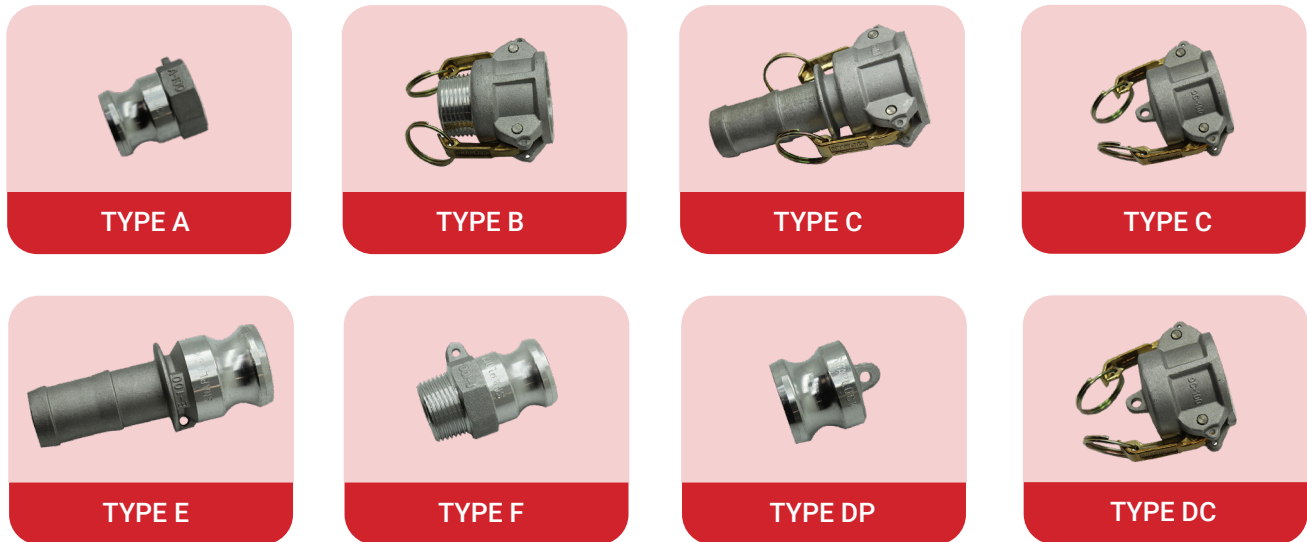
PART NUMBER	DESCRIPTION	TRADE PRICE
PP25	Tri Pole Rocker Switch	£16.60
PP01	Touch Timer Switch, IP66, 220-230v, Adjustable from 1 Sec to 2 Hrs	£77.65
PP08	Rocker Switch, IP55, Single Pole (Legrand)	£20.75



**Camlocks** (also known as cam and groove couplings) enable you to quickly connect and disconnect your hose and pipework. They are designed to carry gases, powders, liquids, vapours and granules. Camlock couplings operate by opening the coupler arms and inserting the adaptor into the coupler. The arms are folded down into position to complete a tight join.

Available in both 1 inch and 2 inch. Made from high quality pressure cast aluminium.

- Types A and D are BSP Female Threaded Connections
- Types B and F are BSP Male Threaded Connections
- Types C and E have Hose Tail Connections



## 3/4" CAM & GROOVE COUPLINGS

PART NUMBER	DESCRIPTION	TRADE PRICE
GFH4-A075PP	3/4" Polypropylene Cam & Groove Coupling - Type A	£6.15
GFH4-C075PP	3/4" Polypropylene Cam & Groove Coupling - Type C	£5.70

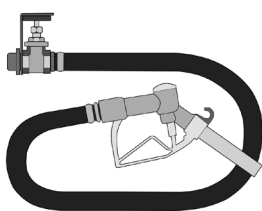
## 1" CAM & GROOVE COUPLINGS

GFH4-A100AL	1" Aluminium Cam & Groove Coupling - Type A	£4.65
GFH4-B100AL	1" Aluminium Cam & Groove Coupling - Type B	£7.20
GFH4-C100AL	1" Aluminium Cam & Groove Coupling - Type C	£7.20
GFH4-D100AL	1" Aluminium Cam & Groove Coupling - Type D	£8.05
GFH4-E100AL	1" Aluminium Cam & Groove Coupling - Type E	£4.40
GFH4-F100AL	1" Aluminium Cam & Groove Coupling - Type F	£4.40
GFH4-DC100AL	1" Aluminium Cam & Groove Coupling - Type DC	£8.05
GFH4-DP100AL	1" Aluminium Cam & Groove Coupling - Type DP	£4.65

## 2" CAM & GROOVE COUPLINGS

GFH4-A200AL	2" Aluminium Cam & Groove Coupling - Type A	£5.40
GFH4-B200AL	2" Aluminium Cam & Groove Coupling - Type B	£12.70
GFH4-C200AL	2" Aluminium Cam & Groove Coupling - Type C	£13.35
GFH4-D200AL	2" Aluminium Cam & Groove Coupling - Type D	£15.30
GFH4-E200AL	2" Aluminium Cam & Groove Coupling - Type E	£12.45
GFH4-F200AL	2" Aluminium Cam & Groove Coupling - Type F	£7.50
GFH4-DC200AL	2" Aluminium Cam & Groove Coupling - Type DC	£8.80
GFH4-DP200AL	2" Aluminium Cam & Groove Coupling - Type DP	£6.55

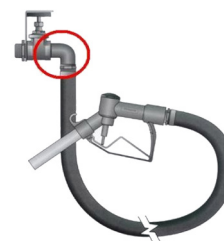




**HOSE KIT WITH  
STRAIGHT CONNECTION**



**HOSE KIT WITH  
90° GATE VALVE CONNECTION**



**HOSE KIT WITH  
90° DROP ELBOW CONNECTION**

## DISPENSING KIT WITH STRAIGHT CONNECTION

Suitable for where the hose does not kink downwards immediately. Comes complete with 1" BSPM tank connector; 1" gate valve; length of 1" cloth reinforced diesel delivery hose; and a 1" manual nozzle.

PART NUMBER	DESCRIPTION	TRADE PRICE
GFH3603	Straight Connection Diesel Dispensing Kit - 3m Hose	£106.00
GFH3603-4	Straight Connection Diesel Dispensing Kit - 4m Hose	£114.00
GFH3603-5	Straight Connection Diesel Dispensing Kit - 5m Hose	£123.00
GFH3603-6	Straight Connection Diesel Dispensing Kit - 6m Hose	£131.00
GFH3603-8	Straight Connection Diesel Dispensing Kit - 8m Hose	£147.00
GFH3603-10	Straight Connection Diesel Dispensing Kit - 10m Hose	£166.00

## DISPENSING KIT WITH 90° GATE VALVE CONNECTION

Ideal for use where the hose drops immediately it comes out of the tank. Comes complete with 1" BSPM tank connector; 1" 90° gate valve (with handwheel facing forward); length of 1" cloth reinforced diesel delivery hose; and a 1" manual nozzle.

PART NUMBER	DESCRIPTION	TRADE PRICE
GFH3650	90° Gate Valve Connection Diesel Dispensing Kit - 3m Hose	£94.00
GFH3650-4	90° Gate Valve Connection Diesel Dispensing Kit - 4m Hose	£102.00
GFH3650-5	90° Gate Valve Connection Diesel Dispensing Kit - 5m Hose	£111.00
GFH3650-6	90° Gate Valve Connection Diesel Dispensing Kit - 6m Hose	£119.00
GFH3650-8	90° Gate Valve Connection Diesel Dispensing Kit - 8m Hose	£135.00
GFH3650-10	90° Gate Valve Connection Diesel Dispensing Kit - 10m Hose	£152.00

## DISPENSING KIT WITH 90° DROP ELBOW CONNECTION

Ideal for use where the hose drops immediately it comes out of the tank. Comes complete with 1" BSPM tank connector; 1" gate valve; 1" 90° Drop Elbow; length of 1" cloth reinforced diesel delivery hose; and a 1" manual nozzle.

PART NUMBER	DESCRIPTION	TRADE PRICE
GFH3655	90° Drop Elbow Connection Diesel Dispensing Kit - 3m Hose	£107.00
GFH3655-4	90° Drop Elbow Connection Diesel Dispensing Kit - 4m Hose	£116.00
GFH3655-5	90° Drop Elbow Connection Diesel Dispensing Kit - 5m Hose	£124.00
GFH3655-6	90° Drop Elbow Connection Diesel Dispensing Kit - 6m Hose	£132.00
GFH3655-8	90° Drop Elbow Connection Diesel Dispensing Kit - 8m Hose	£149.00
GFH3655-10	Elbow Connection Diesel Dispensing Kit - 10m Hose	£166.00
GFH3600	Economy Hose Kit with Gate Valve, 3m Hose & Nozzle	£98.00
GFH3565	Hose Only, Per Metre	£11.00

**ADBLUE IBC GRAVITY HOSE KIT**

This IBC gravity feed kit is perfect accessory pumping AdBlue from your IBC. This IBC gravity hose kit is supplied in a range of hose lengths and is complete with a Manual Nozzle, Cam Fittings and an Adaptor for connecting to an IBC outlet ball valve.

- 3m, 4m and 5m hose lengths available
- 3/4" manual nozzle with S/S spout
- Suitable for – AdBlue
- Cam fittings and and adaptor or IBC connection



PART NUMBER	DESCRIPTION	TRADE PRICE
GFH3000-IBC-AB	IBC Gravity Feed Hose Kit - 3m	£77.00
GFH4000-IBC-AB	IBC Gravity Feed Hose Kit - 4m	£81.50
GFH5000-IBC-AB	IBC Gravity Feed Hose Kit - 5m	£125.00

**PVC NITRILE CLOTH REINFORCED HOSE 3/4" & 1"**

An alternative to rubber hose, this reinforced PVC nitrile diesel fuel hose is a strong, effective and affordable alternative for conveying diesel oil through gravity feed lines. It is a hardwearing product that offers excellent oil, fuel and abrasion resistance to ensure longevity. Available in 3/4" or 1" c/w Aluminium BSP Male Tails.

- Outer Diameter for 3/4" - 1 1/4"   ➤ Working Pressure for 3/4" - 75 P.S.I   ➤ Burst Pressure - 300 P.S.I
- Outer Diameter for 1" - 1 3/8"   ➤ Working Pressure for 1"- 60 P.S.I   ➤ Burst Pressure - 240 P.S.I



PART NUMBER	DESCRIPTION	TRADE PRICE
P7501.6	1.6m x 3/4" (19mm ID) Hose c/w Crimped Aluminium BSP Male Tails	£30.75
P7502	2m x 3/4" (19mm ID) Hose c/w Crimped Aluminium BSP Male Tails	£33.50
P7503	3m x 3/4" (19mm ID) Hose c/w Crimped Aluminium BSP Male Tails	£37.25
P7504	4m x 3/4" (19mm ID) Hose c/w Crimped Aluminium BSP Male Tails	£44.25
P7506	6m x 3/4" (19mm ID) Hose c/w Crimped Aluminium BSP Male Tails	£54.00
P7508	8m x 3/4" (19mm ID) Hose c/w Crimped Aluminium BSP Male Tails	£65.75
P7510	10m x 3/4" (19mm ID) Hose c/w Crimped Aluminium BSP Male Tails	£78.25
GFH3550	3/4" Hose Only - Per Meter	£8.75

P4001.6	1.6m x 1" (25mm ID) Hose c/w Crimped Aluminium BSP Male Tails	£37.75
P4002	2m x 1" (25mm ID) Hose c/w Crimped Aluminium BSP Male Tails	£40.95
P4003	3m x 1" (25mm ID) Hose c/w Crimped Aluminium BSP Male Tails	£45.50
P4004	4m x 1" (25mm ID) Hose c/w Crimped Aluminium BSP Male Tails	£49.75
P4006	6m x 1" (25mm ID) Hose c/w Crimped Aluminium BSP Male Tails	£69.00
P4008	8m x 1" (25mm ID) Hose c/w Crimped Aluminium BSP Male Tails	£83.00
P4010	10m x 1" (25mm ID) Hose c/w Crimped Aluminium BSP Male Tails	£102.25
GFH3565	1" Hose Only - Per Meter	£10.90

# FUEL DISPENSING HOSE

## NBR/PU/PVC STEEL REINFORCED HOSE 3/4" & 1"

Two-layer hose in thermoplastic PVC, PU, Nitrile Rubber compound with embedded galvanised steel spiral with polyester yarn reinforcement for suction and delivery of oils, blue diesel, diesel, bio diesel. Available in 3/4" or 1" c/w Aluminium BSP Male Tails.

- Outer Diameter for 3/4" - 28mm
- Working Pressure for 3/4" - 16 Bar
- Burst Pressure - 48 Bar
- Outer Diameter for 1" - 35.5mm
- Working Pressure for 1" - 16 Bar
- Burst Pressure - 48 Bar



PART NUMBER	DESCRIPTION	TRADE PRICE
P7501.6-V	1.6m x 3/4" (19mm ID) Steel Reinforced Hose c/w Crimped Aluminium BSP Male Tails	£41.00
P7502-V	2m x 3/4" (19mm ID) Steel Reinforced Hose c/w Crimped Aluminium BSP Male Tails	£47.00
P7503-V	3m x 3/4" (19mm ID) Steel Reinforced Hose c/w Crimped Aluminium BSP Male Tails	£55.75
P7504-V	4m x 3/4" (19mm ID) Steel Reinforced Hose c/w Crimped Aluminium BSP Male Tails	£64.50
P7506-V	6m x 3/4" (19mm ID) Steel Reinforced Hose c/w Crimped Aluminium BSP Male Tails	£82.75
P7508-V	8m x 3/4" (19mm ID) Steel Reinforced Hose c/w Crimped Aluminium BSP Male Tails	£101.00
P7510-V	10m x 3/4" (19mm ID) Steel Reinforced Hose c/w Crimped Aluminium BSP Male Tails	£119.00
GFH3550-V	GFH3550-V	£12.50

P4001.6-V	1.6m x 1" (25mm ID) Steel Reinforced Hose c/w Crimped Aluminium BSP Male Tails	£44.75
P4002-V	2m x 1" (25mm ID) Steel Reinforced Hose c/w Crimped Aluminium BSP Male Tails	£51.75
P4003-V	3m x 1" (25mm ID) Steel Reinforced Hose c/w Crimped Aluminium BSP Male Tails	£65.75
P4004-V	4m x 1" (25mm ID) Steel Reinforced Hose c/w Crimped Aluminium BSP Male Tails	£85.50
P4006-V	6m x 1" (25mm ID) Steel Reinforced Hose c/w Crimped Aluminium BSP Male Tails	£99.25
P4008-V	8m x 1" (25mm ID) Steel Reinforced Hose c/w Crimped Aluminium BSP Male Tails	£128.75
P4010-V	10m x 1" (25mm ID) Steel Reinforced Hose c/w Crimped Aluminium BSP Male Tails	£157.25
GFH3565-V	1" Hose Only - Per Meter	£16.50

## ADBLUE COMPATIBLE HOSE 3/4"

3/4" diameter soft PVC hose with Polyurethane underlayer with polyester yarn reinforcement and PU adhesive middle layer, for pressurized transfer oil, diesel oil, blue diesel and urea.

- Outer Diameter for 3/4" - 26mm
- Working Pressure for 3/4" - 15 Bar
- Burst Pressure - 45 Bar



PART NUMBER	DESCRIPTION	TRADE PRICE
GFH3550-POL	3/4" AdBlue Delivery Hose - Per Meter	£6.75
GFH3550-AB	3/4" AdBlue Polipo Hose Suction Hose - Per Meter	£6.75
GFH3550-PVC	3/4" AdBlue Blue PVC Hose - Per Meter	£6.75

## GPI STATIC BONDED HOSE

Static wire prevents static electricity buildup for safe operation. Durable grounded hose with spring support to avoid kinking. For use with AC or DC electric pumps.

- Hose Type - Anti-Static Bonded
- Connection - 3/4 in. NPT x 3/4 in. Zinc Hose Fitting



PART NUMBER	DESCRIPTION	TRADE PRICE
GP110187-502	10ft (3m) 3/4" GPI Static Bonded Hose c/w 3/4" NPT Tails	POA
GP110187-501	12ft (3.6m) 3/4" GPI Static Bonded Hose c/w 3/4" NPT Tails	POA

Fuel hose reels are often used when a tank installation has a long length of delivery hose attached, installing a hose reel creates a simple, convenient storage solution for this. Also, when the tank is situated a distance away from the dispensing point is another reason to install a hose reel, to reduce the risk of the hose being left or dragging along the floor when refuelling is complete. All of our hose reels are 'spring rewind', this means the hose automatically retracts after use so there is no need to manually reel the hose back in.



### SPRING REWIND HOSE REELS

Available to suit hose lengths up to 40 metres. SAV versions are Stainless Steel models or PAV for Painted Mild Steel models. See table below for models and maximum capacities.

**Tip 1:** Use Stainless Steel where the Hose Reel is to be stored externally/used for Adblue and use Painted Mild Steel where the Hose Reel is going to be stored internally.

**Tip 2:** If you are likely to leave some of the hose on the reel when using this then choose a steel reinforced hose so that it cannot collapse on the reel and restrict the flow. Remember that the longer the length of hose the slower the flow of fluid in any case.



### STAINLESS STEEL & PAINTED MILD STEEL HOSE REELS

PART NUMBER	CAPACITY 1" HOSE	CAPACITY 3/4" HOSE
SAV1200 / PAV1200	8m	13m
SAV1300 / PAV1300	15m	18m
SAV3501 / PAV3501	13m	20m
SAV6001 / PAV6001	30m	40m

### STAINLESS STEEL & PAINTED MILD STEEL HOSE REELS

PART NUMBER	DESCRIPTION	TRADE PRICE
GFH-SAV1200	1" BSP In, 3/4" BSP Out Stainless Steel Spring Rewind Hose Reel - 8m 1" Hose / 13m 3/4" Hose	£855.00
GFH-SAV1300	1" BSP In, 3/4" BSP Out Stainless Steel Spring Rewind Hose Reel - 15m 1" Hose / 18m 3/4" Hose	£1,205.00
GFH-SAV3501	1" BSP In, 3/4" BSP Out Stainless Steel Spring Rewind Hose Reel - 13m 1" Hose / 20m 3/4" Hose	£1,147.00
GFH-SAV6001	1" BSP In, 3/4" BSP Out Stainless Steel Spring Rewind Hose Reel - 30m 1" Hose / 40m 3/4" Hose	£1,165.00
ADD	Adblue Convertible for Stainless Steel Reels	£93.50
GFH-SAV-ABSEAL	Adblue Conversion Inlet Seal Kit Only For Stainless Steel Hose Reels	£47.00
GFH-PAV1200	1" BSP In, 3/4" BSP Out Painted Mild Steel Spring Rewind Hose Reel - 8m 1" Hose / 13m 3/4" Hose	£508.00
GFH-PAV1300	1" BSP In, 3/4" BSP Out Painted Mild Steel Spring Rewind Hose Reel - 15m 1" Hose / 18m 3/4" Hose	£699.00
GFH-PAV3501	1" BSP In, 3/4" BSP Out Painted Mild Steel Spring Rewind Hose Reel - 13m 1" Hose / 20m 3/4" Hose	POA
GFH-PAV6001	1" BSP In, 3/4" BSP Out Painted Mild Steel Spring Rewind Hose Reel - 30m 1" Hose / 40m 3/4" Hose	POA
GFH-PAV1200-AD	1" BSP In, 3/4" BSP Out Painted Mild Steel Spring Rewind Hose Reel - <b>FOR ADBLUE</b>	£642.00

## SWIVELLING WALL BRACKETS

Swivel Wall Bracket, available in Stainless Steel and Painted Mild Steel for use with Spring Rewind Hose Reels. See table below to match your bracket to your hose reel.

PART NUMBER	USE WITH SPRING REWIND HOSE REEL
SAV-BRKT20 / PAV-BRKT20	SAV1200 / PAV1200
SAV-BRKT22 / PAV-BRKT22	SAV1300 / PAV1300
SAV-BRKT30 / PAV-BRKT30	SAV3501 / PAV3501



PART NUMBER	DESCRIPTION	TRADE PRICE
ALL BRACKETS	Swivel Brackets for all Stainless Steel & Painted Mild Steel Hose Reels	POA

**PLEASE NOTE:** Hose is NOT Supplied with any reel above, please see pages 35 - 36 for Hose

## HOSE BUMPERS & SPARES

Hose bumpers are fitted to the hose to prevent the nozzle being pulled back into the reel during rewind. These are available for both 3/4" or 1" hose.

PART NUMBER	DESCRIPTION	TRADE PRICE
GFH-HB4940	Hose Bumper for 1" ID Hose	£41.00
GFH-HB4941	Hose Bumper for 3/4" ID Hose	£41.00



GFH-PAV-RS	Spring for Ratchet - Kit 12	£12.85
GFH-PAV1300-SPRING	Main Rewind Spring for Hose Reel 1300	POA
GFH-PAV1200-SPRING	Main Rewind Spring for Hose Reel 1200	POA
GFH-PAV-KIT-93	Ratchet Arm & Spring	£34.95
GFH-SAV-ABSEAL	Viton / Viton Inlet Seal for S/S Hose Reels - Kit 20 New	£32.25

## FLUID FLOW METERS

We stock a great range of flow meters suitable for a wide variety of uses; our selection includes both mechanical and digital flow meters able to measure oil, diesel, fuel, water or heating oil. Fuel flow meters are essential in the management and monitoring of fuel quantities as they are dispensed. All featured flow meters provide high quality, smooth performance coupled with highly accurate dispensing. These products are designed to meet the high demands needed for commercial and agricultural use.

### FMT MECHANICAL OVER GEAR METER

Oval gear mechanical flow meter for various inline installations. Suitable for use with Diesel and Lubricants.

- ▶ Batch Counter - 3 Digit Resettable, Calibrated 100ml
- ▶ Connections - 1" BSP Female Inlet, 1" BSP Female Outlet
- ▶ Cumulative Counter - Six digits, non-resettable lpm
- ▶ Flow Rate - 2-100 lpm (accuracy deteriorates outside this range)
- ▶ Max Working Temperature - 40°C
- ▶ Ambient Working Temperature - +10°C - +50°C
- ▶ Accuracy - +/- 1%



PART NUMBER	DESCRIPTION	TRADE PRICE
P-23-192	1" BSP Oval Gear Flow Meter 2 - 100lpm	£166.00

### FMT ELECTRONIC TURBINE METER

Electronic turbine flow meter for various inline installations. Suitable for use with Diesel and Lubricants.

- ▶ Batch Counter - 5 Digit Counter, Resettable to Zero
- ▶ Connections - 1" BSP Female Inlet, 1" BSP Female Outlet
- ▶ Nominal Pressure - 3.5 Bar / 50 PSI
- ▶ Flow Rate - 15-100 lpm (accuracy deteriorates outside this range)
- ▶ Max Working Temperature - 40°C
- ▶ Ambient Working Temperature - +10°C - +50°C
- ▶ Accuracy - +/- 1%



PART NUMBER	DESCRIPTION	TRADE PRICE
P-23-295	1" BSP Electronic Turbine Flow Meter 15 - 100lpm	£191.50



## PIUSI K24 ADBLUE METER

Digital Turbine Meter, compact easy readable display. Display can be rotated in 4 different positions.

- Counter - 5 Digit Partial and 6 Digit Totaliser
- Connections - 1" M BSP Inlet/Outlet c/w Socket
- Accuracy - +/- 1%
- Display - LCD electronic display (2 x AAA batteries)
- Flow Rate - 6-100ltrs Per Min
- Pressure - 10 Bar / 145 PSI
- Max Working Temperature - -10°C / +50°C
- Fluid Viscosity - 2.5 - 3.5 CST



PART NUMBER	DESCRIPTION	TRADE PRICE
P8-F0040710A	1" BSP Male Piusi K24 AdBlue Flow Meter 6-100ltrs Per Min	£223.75

## GPI M30-L8B MECHANICAL FUEL METER

This quick-fit modular fuel meter is easy to install, easy to use, and easy to maintain. It is designed for the field measurement of thin viscosity petroleum fuel only and intended for use with pump systems in the 114 L/m flow range. Using mechanical gears, this meter translates flow data from a nutating disk into calibrated units which are indicated on the face of the meter. The M30 is equipped with both BSPP and Flange connections which allows it to be installed on all threaded pump outlets or modular GPI products.

- Meter Type - Nutating Disc
- Flow Range - 19-114lpm
- Max Working Pressure - 50 PSI
- Max Batch Total - 999.9
- Max Cumulative Total - 999,999.9
- Inlet/Outlet Threads - 1" BSPP



PART NUMBER	DESCRIPTION	TRADE PRICE
GP165100-06	1" BSPP GPI M30-L8B Mechanical Fuel Flow Meter - Accuracy +/- 2%	£336.50



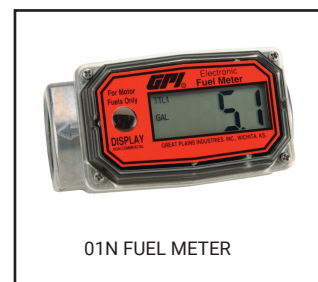
Great Plains Industries are one of the leading manufacturers of fluid flow meters, flow sensors, flow monitors and flow control equipment. GPI have become the first choice supplier for fuel meters, water meters, chemical meters and general purpose flow measurement.

As a UK GPI supplier we have an extensive range of digital turbine flow meters, suitable for low to medium viscosity fluids. These come with a choice of construction materials and end fittings. Most GPI digital turbine meters are ATEX certified for hazardous areas and are available in a range of materials including: Aluminium, Stainless Steel, Brass, Nylon, PVC and PVDF.

## 01 ECONOMY FUEL & WATER METERS

These 01 Meters are basic economy models. The 01A for petrol, diesel and kerosene, and the 01N for water and light chemicals. The battery powered electronic displays on both models are calibrated to read litres and gallons.

- Accurate, reliable and lightweight meter with rugged aluminium housing and sealed electronic circuitry
- Powered by two AAA batteries that are easy to replace
- Factory calibrated for petroleum fuel with a choice of gallon and litre measurement
- Works well on any pump or gravity feed system with at least 3-30 GPM (10-100lpm) flow range
- Applications: Fuel, Diesel, Kerosene
- Available size: 1" BSPF



PART NUMBER	DESCRIPTION	TRADE PRICE
GP113255-12	01A52LM 1" BSP Aluminium Flow Meter, 10-100lpm - Accuracy +/- 2.5%	£265.00

- Simple, small and sturdy Electronic Digital Water Meter with rugged nylon housing
- Mount on the end of a hose or a pipe, in-line
- Complete meter, including turbine assembly, microprocessor and LCD readout.
- Works well on any pump or gravity feed system with at least 3-30 GPM (10-100lpm) flow range
- Applications: Water, Light Chemicals
- Available size: 1" ISO



PART NUMBER	DESCRIPTION	TRADE PRICE
GP113255-6	01N12LM 1" ISO Nylon Flow Meter, 10-100lpm - Accuracy +/- 5%	£277.50

We have selected a handful of meters which we think are the most popular out of their ranges and have priced them accordingly to save time on quoting, please note these can change at any time due to the fluctuation of exchange rates.

## A1 COMMERCIAL GRADE METERS

PART NUMBER	DESCRIPTION	TRADE PRICE
GP6353	Aluminium - A1Q9LMA025IA1 - 1" (0.25" Bore) Low Flow, ISO - 1-10lpm	£705.00
GP6340	Aluminium - A1Q9LMA100BA1 - 1" BSP - 10-190lpm - Accuracy +/- 1.5%	£720.00
GP6400	Aluminium - A1Q9LMA200IA2 - 2" ISO - 100-1135lpm - Accuracy +/- 1.5%	£1,423.00
GP6355	Nylon - A1Q9LMN025IA1 - 1" (0.25" Bore) Low Flow, ISO - 1-10lpm - Accuracy +/- 1.5%	£742.25
GP6360	Nylon - A1Q9LMN100IA1 - 1" ISO - 10-190lpm - Accuracy +/- 1.5%	£746.75

## G2 INDUSTRIAL GRADE METERS - STAINLESS STEEL

G2S05IQ9LMA	Stainless Steel 1/2" ISO Female - 3.8-37.9lpm - Accuracy +/- 1.5%	£1,109.00
G2S07IQ9LMA	Stainless Steel 3/4" ISO Female - 7.6-75.7lpm - Accuracy +/- 1%	£1,130.00
0G2S07NQ9LMA	Stainless Steel 3/4" NPT Female - 7.6-75.7lpm - Accuracy +/- 1%	£1,130.00
G2S10IQ9LMA	Stainless Steel 1" ISO Female - 18.9-190lpm - Accuracy +/- 1%	£1,113.00
G2S15IQ9LMB	Stainless Steel 1 1/2" ISO Female - 38-380lpm - Accuracy +/- 0.75%	£1,543.00
G2S20IQ9LMB	Stainless Steel 2" ISO Female - 76-760lpm - Accuracy +/- 0.75%	£2,011.00

## G2 INDUSTRIAL GRADE METERS - STAINLESS STEEL, HIGH PRESSURE- Non-Approved Version - SAFE AREA ONLY

G2H05IQ9LMV	Stainless Steel, High Pressure - 1/2" ISO Female - 3.8-37.9lpm - Accuracy +/- 1.5%	£1,179.00
G2H07IQ9LMV	Stainless Steel, High Pressure 3/4" ISO Female - 7.6-75.7lpm - Accuracy +/- 1%	£1,202.00
G2H10IQ9LMV	Stainless Steel, High Pressure 1" ISO Female - 18.9-190lpm - Accuracy +/- 1%	£1,223.00
G2H15IQ9LMW	Stainless Steel, High Pressure 1 1/2" ISO Female - 38-380lpm - Accuracy +/- 0.75%	£1,242.00
G2H20IQ9LMW	Stainless Steel, High Pressure 2" ISO Female - 76-760lpm - Accuracy +/-	£2,180.00

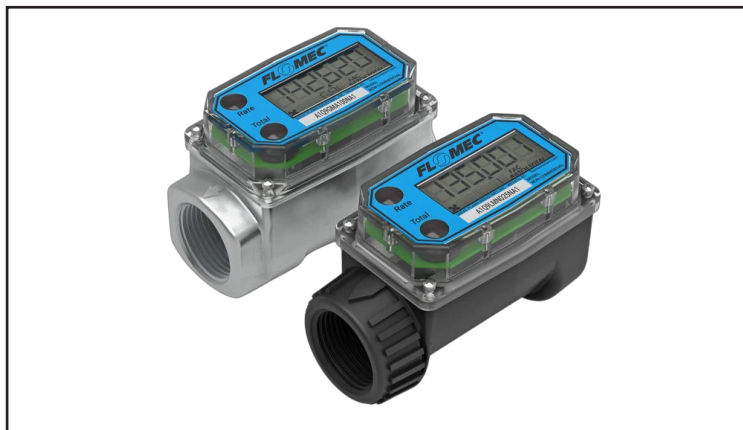
## G2 INDUSTRIAL GRADE METERS - ALUMINIUM

G2A05IQ9LMA	Aluminium - 1/2" ISO Female - 3.8-37.9lpm - Accuracy +/- 1.5%	£920.00
G2A07IQ9LMA	Aluminium - 3/4" ISO Female - 7.6-75.7lpm - Accuracy +/- 1%	£939.00
G2A10IQ9LMA	Aluminium - 1" ISO Female - 18.9-190lpm - Accuracy +/- 1%	£953.00
G2A10NQ9LMA	Aluminium - 1" NPT Female - 18.9-190lpm - Accuracy +/- 1%	£960.00
G2A15IQ9LMB	Aluminium - 1 1/2" ISO Female - 38-380lpm - Accuracy +/- 0.75%	£1,168.00
G2A20IQ9LMB	Aluminium - 2" ISO Female - 76-760lpm - Accuracy +/- 0.75%	£1,592.00

## TM SERIES WATER METERS

TM05SQ9LMA	1/2" Spigot Connection Water Flow Meter c/w Q9 Display - 3.8-38lpm - Accuracy +/- 3%	£395.00
TM10BQ9LMA	1" BSP Connection Water Flow Meter c/w Q9 Display - 3.8-38lpm - Accuracy +/- 3%	£533.00
TM15BQ9LMB	1 1/2" BSP Connection Water Flow Meter c/w Q9 Display - 38-380lpm - Accuracy +/- 3%	£609.00
TM20BQ9LMB	2" BSP Connection Water Flow Meter c/w Q9 Display - 76-760lpm - Accuracy +/- 3%	£655.00

## A1 SERIES TURBINE FLOW METERS



A1 Series Meters are designed as self-contained, battery-powered units. Select the A1 Series when you need an accurate, basic meter. They are available in Aluminium or Nylon. Use the Aluminum model for petroleum products. Nylon meter for use in water or non-aggressive chemical applications.

- Unique package combines Turbine and LCD into a self-contained, compact, economical meter
- Local Display Computer features: 2 Totals (1 Resettable, 1 Cumulative); Rate of Flow and User Configuration
- Output capabilities available to communicate with process control equipment
- Lightweight, compact design allows for easy installation
- AAA Alkaline battery life: 2 years
- Available sizes: Nylon - Low Flow, 1" / Aluminium - Low Flow, 1" & 2"

### A1 METER APPLICATIONS

- Fuel Products (Aluminum model)
- Fuel Transfer
- Water / Non-Aggressive Chemicals (Nylon model)
- Plant Process Water (Nylon model)
- Ag Chemicals
- Batching / Blending
- Solvents / Glycol
- Chemical Feed Lines

### TRADE PRICE

All prices on customised part numbers will be priced on availability Contact us for a quote.

## A1 METER PRODUCT CONFIGURATION

### 1. PRODUCT IDENTIFIER

**A1** = Commercial Grade Electronic Digital Meter

### 2. ELECTRONIC CHOICE

#### LOCAL COMPUTER W/ DISPLAY, METER MOUNTED

**Q9** = Q9 2-Button Computer Display

#### LOCAL COMPUTER W/ DISPLAY & MODULE, METER MOUNTED

**P9** = Q9 2-Button Computer w/Pulse Out Module, includes External Power and 10 ft. of Cable.

**42** = Q9 2-Button Computer w/4-20mA Module and 10 ft. of Cable.

#### MODULE, METER MOUNTED (NO DISPLAY)

**PO** = Pulse Out (Unscaled) Conditioned Signal Module w/Cable.

#### RETROFIT COMPUTER KIT (DISPLAY ONLY)

**R9** = Q9 2-Button Computer Retrofit Kit (Replaces Q9 Display)

#### NO ELECTRONICS - TURBINE ONLY

**XX** = No Electronics - Turbine Only

### 3. CALIBRATION OF COMPUTER / DISPLAY

**GM** = GPM & L/min (Gallons Default)

**LM** = GPM & L/min (Litres Default)

**XX** = No Computer

### 4. TURBINE MATERIAL & SIZE

**A025** = Aluminum - Low Flow

**A100** = Aluminum - 1 inch

**A200** = Aluminum - 2 inch

**N025** = Nylon - Low Flow

**N100** = Nylon - 1 inch

**X###** = No Turbine\*\*

### 5. FITTING TYPE

**N** = NPT (Female)

**I** = ISO (Female) BSPT

**B** = BSPP Female - available on A025 and A100 turbines only

**X** = No Turbine

### 6. PACKAGING AND HAZARDOUS AREA RATING

#### With FM, ATEX & IEC Approval for HAZARDOUS AREA

**A1** = Standard or Low Flow, 1 inch (w/Q9 & R9 Electronics Choice)

**A2** = Standard, 2 inch (w/Q9 & R9 Electronics Choice)

**B1** = Standard or Low Flow, 1 inch Turbine Only

**B2** = Standard, 2 inch Turbine Only

**B3** = Display Only

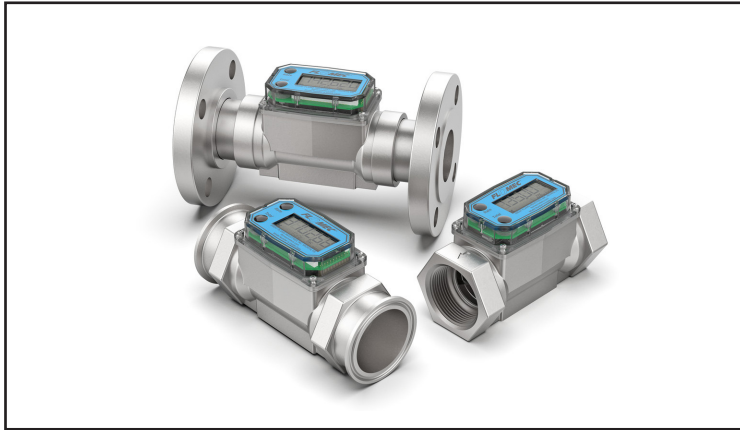
#### Non-Approved Version - SAFE AREA ONLY

**C2** = Low Flow through 2 inch Turbines (w/P9, 42, & PO Electronics Choice)

### PART NUMBER EXAMPLE

1	2	3	4	5	6
A1	Q9	LM	A100	B	A1

## G2 SERIES TURBINE FLOW METERS



The Industrial Grade Meters are unique in the fact that they allow you to design a meter to meet your exact application. Therefore choosing a turbine depends on fitting type, line size, chemical compatibility, flow rate, pressure rating and temperature range. When selecting a G2 Series Meter there is a wide range of materials and sizes to choose from.

- Meters are designed for thin fluids < 100 cp
- Modular design allows for use with Output Modules, Sensors and Remote Transmitters
- 2 Totals (Batch = Resettable, Cumulative = Non resettable); Rate of Flow, Factory calibrated in gallons or litres
- High accuracy meter
- AAA Alkaline battery life: 2 years
- Available sizes: 1/2", 3/4", 1", 1 1/2", 2" (depending on meter type)

### G2 METER APPLICATIONS

- Fuel Products
- Food & Beverage Processing
- Harsh Chemicals (Sulfuric Acid & Bleach)
- Plant Process Water
- Blending
- Ammonium
- Water
- Chemical Feed Lines

#### 6. CALIBRATION OF COMPUTER / DISPLAY

**GM** = GPM & L/min (Gallons Default)  
**LM** = GPM & L/min (Litres Default)  
**GD** = Gallons Per Minute (Gallons Default) with NIST Certificate  
**LD** = Liters Per Minute (Litres Default) with NIST Certificate  
**XX** = No Computer

#### 7. PACKAGING AND HAZARDOUS AREA RATING

##### WITH FM, ATEX & IEC APPROVAL FOR HAZARDOUS AREA

**A** = 05 Thru 10 Turbines, Turbine Only or w/Q9 Electronics  
05 Thru 20 Electronics Only (Q9 Replacement Kit or R9 Retrofit Kit)  
**B** = 15 & 20 Turbines, Turbine Only or w/Q9 Electronics  
05 Thru 10 Turbines w/Q1 Electronics  
**C** = 15 Thru 20 Turbine w/Q1 Electronics  
**D** = 10 Turbines with ANSI Flange Turbine Only or w/Q9, Q1 Electronics  
**E** = 15 & 20 Turbines with ANSI Flange Turbine Only or w/Q9, Q1 Electronics

##### PART NUMBER EXAMPLE

1	2	3	4	5	6	7
G2	S	05	I	Q9	LM	A

##### TRADE PRICE

All prices on customised part numbers will be priced on availability Contact us for a quote.

## G2 METER PRODUCT CONFIGURATION

#### 1. PRODUCT IDENTIFIER

**G2** = G2 Series Turbine Meters

#### 2. TURBINE MATERIAL

**S** = Stainless Steel  
**A** = Aluminum  
**P** = PVDF (1/2 in. y 1 in. only)  
**H** = High Pressure Stainless Steel  
**X** = Electronics only (For metal meters)  
**Z** = Electronics only (For plastic meters)

#### 3. TURBINE SIZE

**05** = 1/2 inch  
**07** = 3/4 inch  
**10** = 1 inch  
**15** = 1-1/2 inch  
**20** = 2 inch

#### 4. FITTING TYPE

**N** = NPT (Female)  
**I** = ISO (Female) BSPT (ISO 7 Designation is RC)  
**F** = 150# ANSI Flange (Available on S10, S15 & S20 only)  
**T** = Tri-Clamp Fitting (Available on S05, S07, S10, S15 & S20 only)  
**X** = No Turbine Body

#### 5. ELECTRONIC CHOICE

##### LOCAL COMPUTER W/ DISPLAY, METER MOUNTED

**Q9** = Q9 2-Button Computer Display  
**Q1** = Q9 2-Button Computer, Vertical Mount (90° Adapter)  
**H9** = Q9 2-Button Computer with High Temp Riser (185° F/85° C)  
[Available on stainless steel bodies only]

##### LOCAL COMPUTER W/ DISPLAY & MODULE, METER MOUNTED

**P9** = Q9 2-Button Computer w/Pulse Out Module, includes External Power and 10 ft. of Cable.  
**42** = Q9 2-Button Computer w/4-20mA Module and 10 ft. of Cable.

##### MODULE, METER MOUNTED (NO DISPLAY)

**PO** = Pulse Out (Unscaled) Conditioned Signal Module w/Cable.

##### QSI OPTIONS, METER MOUNTED (NO DISPLAY)

**81** = QSI Version 1 (Scaled Pulse, RS485 [Modbus or BACnet], BTU Calculator, Bluetooth®)  
**82** = QSI Version 2 (Scaled Pulse, BTU Calculator, Bluetooth®)  
**83** = QSI Version 3 (Scaled Pulse, 4-20 mA, Bluetooth®)

##### RETROFIT COMPUTER KIT (DISPLAY ONLY)

**R9** = Q9 2-Button Computer Retrofit Kit (Replaces Q9 Display)

##### NO ELECTRONICS - TURBINE ONLY

**XX** = No Electronics - Turbine Only

##### NON-APPROVED VERSION - SAFE AREA ONLY

**V** = 05 Thru 10 Turbines, Turbine Only or w/Q9 Electronics  
05 Thru 20 Electronics Only (Q9 Replacement Kit or R9 Retrofit Kit)  
**W** = 15 & 20 Turbines, Turbine Only or w/Q9 Electronics  
05 Thru 10 Turbines w/Q1 Electronics  
**X** = 15 Thru 20 Turbine w/Q1 Electronics  
05 Thru 20 Turbines w/H9, P9, 42, PO Electronics  
05 Thru 20 Electronics Only (H9, P9 or 42 Electronics)  
**Y** = 10 Turbines with ANSI Flange Turbine Only or w/Q9, Q1, H9, P9, 42, PO Electronics  
**Z** = 15 & 20 Turbines with ANSI Flange Turbine Only or w/Q9, Q1, H9, P9, 42, PO Electronics  
10 Turbines with ANSI Flange w/81, 82, & 83 Electronics  
**F** = 05 Thru 20 Turbines w/81, 82, & 83 Electronics  
**G** = 15 & 20 Turbines with ANSI Flange w/81, 82, & 83 Electronics



## TM SERIES TURBINE FLOW METERS



The TM Series Water Meters are durable, accurate and economical. They are an ideal alternative to other traditional water meters. The TM series offers flow rate and flow total indication which helps to monitor water flow in waste water applications, water treatment and sub-metering applications. There are seven different sizes and a choice of either Spigot or NPT and BSPP fittings. The electronic display is battery powered and are calibrated to read in gallons, litres per minute and on some models cubic feet.

- ▶ Displays in gallons, litres and cubic feet. Indicates Batch, Cumulative Totals and Rate of Flow
- ▶ Available in Spigot, NPT, BSP (1 in., 1-1/2 in. and 2 in. only), 150 ANSI Flange (3 in. and 4 in. only) and DIN Flange (3 in. and 4 in. only) fittings
- ▶ Lightweight, compact design allows for easy installation
- ▶ AAA Alkaline battery life: 2 years
- ▶ Meets Schedule 80 PVC specifications

### TM METER APPLICATIONS

- ▶ OEM water treatment equipment / skids
- ▶ Sub-metering of facility water usage
- ▶ Waste water treatment equipment
- ▶ Irrigation
- ▶ Blending
- ▶ Plant process water
- ▶ Water based cooling systems
- ▶ Chemical Feed Lines

#### PART NUMBER EXAMPLE

1	2	3	4	5	6	7
G2	S	05	I	Q9	LM	A

#### TRADE PRICE

All prices on customised part numbers will be priced on availability. Contact us for a quote.

## TM METER PRODUCT CONFIGURATION

### 1. PRODUCT IDENTIFIER

**TM** = TM Series Turbine Meters

### 2. TURBINE SIZE

**05** = 1/2 inch      **20** = 2 inch  
**07** = 3/4 inch      **30** = 3 inch  
**10** = 1 inch      **40** = 4 inch  
**15** = 1-1/2 inch

### 3. FITTING TYPE

**N** = NPT, Female (Available In All Sizes)  
**B** = BSP, Female (1 in., 1-1/2 in., 2 in. Only)  
**F** = Flange, ANSI (3 in., 4 in. Only)  
**D** = Flange, DIN (3 in., 4 in. Only)  
**S** = Spigot (Available In All Sizes)

#### NO METER - ELECTRONICS ONLY

**X** = No Meter - Use With X9 Electronics Only (Q9 Computer Replacement Kit)

### 5. ELECTRONIC CHOICE

#### LOCAL COMPUTER W/ DISPLAY, METER MOUNTED

**Q9** = Q9 2-Button Computer Display  
**Q1** = Q9 2-Button Computer, Vertical Mount (90° Adapter)

#### LOCAL COMPUTER W/ DISPLAY & MODULE, METER MOUNTED

**P9** = Q9 2-Button Computer w/Pulse Out Module, includes External Power and 10 ft. of Cable.  
**42** = Q9 2-Button Computer w/4-20mA Module and 10 ft. of Cable.

#### MODULE, METER MOUNTED (NO DISPLAY)

**PO** = Pulse Out (Unscaled) Conditioned Signal Module w/Cable.

#### REPLACEMENT COMPUTER KIT (DISPLAY ONLY)

**X9** = Q9 2-Button Computer Replacement Kit

#### RETROFIT COMPUTER KIT (DISPLAY ONLY)

**R9** = Q9 2-Button Computer Retrofit Kit (Replaces Q9 Display)

#### NO ELECTRONICS - TURBINE ONLY

**XX** = No Electronics - Turbine Only

### 6. CALIBRATION OF COMPUTER / DISPLAY

**GM** = Gallons Per Minute (For Use With Q9, P9, 42, X9, R9 Electronics Only)  
**LM** = Liters Per Minute (For Use With Q9, P9, 42, X9, R9 Electronics Only)  
**XX** = No Calibration (Use With PO & XX Electronics Only)

### 6. PACKAGING AND HAZARDOUS AREA RATING

**A** = 05 Thru 10 Turbine Only  
05 Thru 10 Turbine w/Q9 Electronics  
X9 & R9 Electronics Kit (Replacement Computer)  
**B** = 15 Thru 20 Turbine Only  
15 Thru 20 Turbine w/Q9 Electronics  
**C** = 05 Thru 20 Turbine w/P9, 42, PO Electronics  
**D** = 30N, 30S Turbine Only  
30N, 30S Turbine w/Q9, P9, 42, PO Electronics  
40S Turbine Only  
40S Turbine w/Q9, P9, 42, PO Electronics  
**E** = 30F, 30D Turbine Only  
30F, 30D Turbine w/Q9, P9, 42, PO Electronics  
40N, 40F, 40D Turbine Only  
40N, 40F, 40D Turbine w/Q9, P9, 42, PO Electronics



## STEEL LEVER DRUM PUMP

A light duty lever hand pump for use with Diesel fuel, Kerosene and lightweight or medium weight oils. Supplied complete with a suction pipe to fit into a barrel. Up to 1 litre per stroke.

PART NUMBER	DESCRIPTION	TRADE PRICE
P3930	Steel Lever Drum Pump	£38.95



## CAST IRON ROTARY DRUM PUMP

A light duty Rotary Hand Pump for use with diesel fuel. kerosene and lightweight or medium weight oils. Supplied complete with a suction pipe to fit into a barrel. Approximately 1 litre every 3 revolutions.

PART NUMBER	DESCRIPTION	TRADE PRICE
P-13-055	Cast Iron Rotary Drum Pump	£72.50



## GPI RP-10 ROTARY HAND PUMP

The RP-10 - 10 GPM (38 L/min) /100 revolutions manual fuel transfer hand pump has 1 in. FNPT inlet and 3/4 in. NPT outlet connection use with petrol, diesel and kerosene. Lightweight but extremely durable aluminum housing to resist scratches and corrosion. **KIT INCLUDES:**

- ▶ The RP-10-UL Up to 10 gallons per 100 revolutions hand pump
- ▶ Anti-siphon valve
- ▶ Dispensing hose
- ▶ Telescopic suction pipe
- ▶ Nozzle and bung adapter
- ▶ Handle locking cable

PART NUMBER	DESCRIPTION	TRADE PRICE
GP123000-06	RP-10-UL Pump Kit	£383.00
GP123503-1	RP-10 Overhaul Kit - Includes: Vanes, Springs, Shaft Seal Kit	£105.00



## GPI HP-100 ROTARY HAND PUMP

The HP-100 Dual-flo hand pump is a premium hand pump that is reliable and versatile. For high volume fuel transfer, use the high handle position. The HP-100 generates twice the flow of any other hand pump. For heavier fluids or for easier pumping, use the second stroke setting. In either handle position, expect economical, trouble-free operation. **KIT INCLUDES:**

- ▶ The HP-100 Up to 50 Gal per 100 strokes hand pump
- ▶ Telescopic suction pipe
- ▶ Dispensing hose
- ▶ Lockable lever
- ▶ Nozzle and bung adapter

PART NUMBER	DESCRIPTION	TRADE PRICE
GP114000-7	HP-100-PO Dual Flow Pump Only	£305.00
GP114000-5	HP-100-NUL Dual Flow Pump Kit	£329.00



GP114000-10	HP-100-UL Dual Flow Pump Kit	£343.00
GP114505-2	HP-100 Overhaul Kit	£114.00
GP123504-1	HP-100 Anti Siphon Vent Kit	£31.50
GP114014-502	HP-100 Handle	£36.75
GP114510-503	HP-100 Hardware Kit	£28.50

**PIUSI ROTARY HAND PUMP FOR ADBLUE**

The Piusi AdBlue™ Hand Pump is a premium, manual rotary model specially designed for the transfer of AdBlue™ (DEF) from a drum, where there is no access to power.

PART NUMBER	DESCRIPTION	TRADE PRICE
P8-F00332A00	Premium Piusi Rotary Hand Pump for Adblue - Drum Adaptor	£240.00
P8-F00332A20	Premium Piusi Rotary Hand Pump for Adblue - c/w Hoses and Drum Adaptor	£330.00

**ROTARY HAND PUMP FOR ADBLUE**

This rotary hand pump for AdBlue, is a cost effective way of transferring AdBlue from a drum. Often used when only low volumes are being dispensed and power is not available for an electric pump.

PART NUMBER	DESCRIPTION	TRADE PRICE
AB-RHP-1000	Rotary Hand Pump for AdBlue w/ Telescopic Suction Tube	£73.50

**LEVER HAND PUMP FOR ADBLUE**

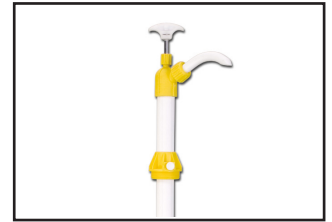
This lever hand pump for AdBlue, is a cost effective way of transferring AdBlue from a drum. Often used when only low volumes are being dispensed and power is not available for an electric pump.

PART NUMBER	DESCRIPTION	TRADE PRICE
AB-CM0500	AdBlue Lever Hand Pump - c/w Suction & Hose	£44.50
AB-CM2100-A	2" BSP Adaptor to 2" Butress Male Thread (Plastic Drums)	£7.85

**PISTON DRUM PUMP - POLYPROPYLENE**

Self priming Vertical Lift Pump designed for use with antifreeze, detergents etc. Polypropylene construction with steel plunger rod & viton seals. Complete with 2" polypropylene bung adaptor for use on 55 gallons.

PART NUMBER	DESCRIPTION	TRADE PRICE
P3940	Piston Drum Pump, PP, Mild Steel, Viton	£30.55

**PISTON DRUM PUMP - NYLON**

Self priming Vertical Lift Pump designed primarily for use with lacquer thinners, Urea, AdBlue, DEF. Nylon construction with stainless steel plunger rod & PTFE seals Complete with 2" polypropylene bung adaptor.

PART NUMBER	DESCRIPTION	TRADE PRICE
P3942	Piston Drum Pump, Nylon, SS, PTFE	£44.25

**CHEMICAL ROTARY HAND PUMP**

Pump body & handle are constructed using glass filled Polypropylene' Vanes made out of Ryton. Complete with 3 pc threaded suction tube for use on 50 Litre (15 gallon) to 205 Litre (55 gallon) drums.

PART NUMBER	DESCRIPTION	TRADE PRICE
P3945	Rotary Drum Pump, PRP, Ryton, Viton	£124.25

**DRILL PUMPS**

These convenient little drill pumps can be used in all sorts of temporary applications. Suitable for both diesel and water. They require any sort of drill capable of receiving a 6mm/8mm drill shaft to operate them.

PART NUMBER	DESCRIPTION	TRADE PRICE
P-Drill-3/4	Drill Pump, 3/4" Threads, 50lpm, NBR Impellor	£19.75
P-Drill-1/2	Drill Pump, 1/2" Hosetails, 25lpm, NBR Impellor	£15.75
P-Drill-W-3/4	Drill Pump for Water, 3/4" Threads, 20lpm, NBR Impellor	£8.00



As well as being a supplier of GPI flow meters we also list a wide range of GPI/GPro transfer pumps, delivering long-lasting, low maintenance gear and vane pumps for mobile installations such as mounting to a barrel, skid tank, or onto a truck bed tank of 100 gallons or less. They offer a variety of flow rates from 19 - 132 LPM. All GPI pumps are constructed of all aluminum parts with powder-coated motor housings that never rust. Pumps are available as pump only or as part of a kit.

**\*PLEASE NOTE:** GPI/GPro pump prices are inclusive of shipping from USA and supplied ex works from our factory with an average 2 week lead time. Standard UK/international carriage terms from our factory apply.

UL Listed means that the product has been tested by UL to nationally recognized safety and sustainability standards. Additionally, it has been found to be free from a reasonably foreseeable risk of fire, electric shock in a Division 2 environment. All pumps marked as **UL LISTED** come with UL certification.

ATEX certification ensures that equipment will work safely in explosive environment without causing any accident if used as per the manufacturer's recommendations. Equipment used in explosive atmosphere within the European Union (EU) and the European Economic Area (EEA) must be ATEX certified. All pumps marked as **ATEX APPROVED** come with ATEX certification.



## G8P 12V 30LPM PORTABLE GEAR PUMP KIT - UL LISTED

The G8P is ideal for on the go fueling for off-road and marine vehicles, landscaping, light industrial, and more. It features a rotary gear design, a 12 V(dc) motor, delivering gas station equivalent flow rates up to 8 GPM for gasoline, diesel fuel and kerosene. Made from durable, lightweight cast aluminum, G8P is 20% lighter than similar portable pumps, and its comfort grip handle provides increased maneuverability when you need it most. The motor is U.L. Listed to U.S. and Canadian safety standards.

- ▶ Connecting cable – Length: 12ft (3.6m)
- ▶ Connection inlet/outlet – 3/4" NPT Female
- ▶ Dispensing Hose - Buna-N, 8ft. (2.4m) x 5/8 IN.
- ▶ Flow rate – 30 L/min
- ▶ Max Pressure – 10 PSI (0.69 Bar)
- ▶ Suction Hose – 8ft suction hose with strainer

PART NUMBER	DESCRIPTION	TRADE PRICE
GP147000-0	12v 30lpm 1" GPI G8P Transfer Pump Kit	£646.40



## EZ-8 12V 30LPM GEAR PUMP KIT - UL LISTED

GPI EZ-8 Fuel Transfer Pump features a rotary gear design and is made from durable, lightweight corrosion-resistant diecast aluminum. The 12-VDC motor delivers gas station equivalent flow rates (up to 8 GPM) for gasoline, diesel fuel, ethanol blends, and kerosene. The EZ-8 is ideal for on the go fueling for agricultural and automotive applications and is the pump of choice for refueling recreational vehicles. The EZ-8 comes with a manual unleaded nozzle, fuel hose, power cord and adjustable suction pipe or as a pump only option.

- ▶ Connecting cable – Length: 15ft (4.6m)
- ▶ Connection – Inlet - 1" NPTF / Outlet - 3/4" NPTF
- ▶ Dispensing Hose - Buna-N, 10ft. (3.05m) x 5/8 IN.
- ▶ Flow rate – 30 L/min
- ▶ Max Pressure – 15 PSI (1.03 Bar)
- ▶ Suction Pipe - Telescoping 15 IN. to 40 IN. x 1" NPT

PART NUMBER	DESCRIPTION	TRADE PRICE
GP137200-01	12v 30lpm 3/4" GPI EZ-8 Transfer Pump Only	£343.29
GP137100-01	12v 30lpm 3/4" GPI EZ-8 Transfer Pump Kit w/ Manual Nozzle, 3m Hose	£558.43

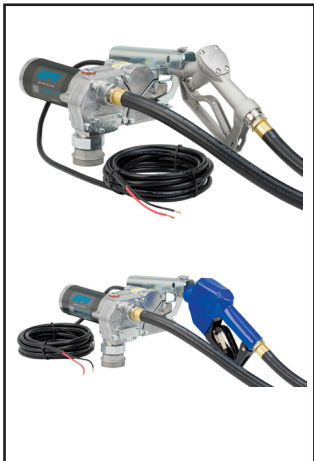


## M-150S-MU/AU 12V 57LPM GEAR PUMP KIT - UL LISTED

The GPI M-150S series is the pump of choice for agricultural, automotive and construction applications dispensing gasoline, diesel fuel, and kerosene with flow rates up to 57 L/min. The M150S features a self-priming rotary gear design, a 12-volt (dc) motor, and a lightweight cast aluminum body that resists corrosion. It comes with a manual/automatic unleaded nozzle, a telescoping suction pipe to fit tank depths between 15" and 40", convenient spin collar for easy installation, a lockable nozzle holder to deter theft & fuel dispensing hose.

- ▶ Connecting cable – Length: 18ft (5.5m)
- ▶ Connection – Inlet - 1" NPTF / Outlet - 3/4" NPTF
- ▶ Dispensing Hose - Buna-N, 12ft. (3.7m) x 5/8 IN.
- ▶ Flow rate – 57 L/min
- ▶ Max Pressure – 15 PSI (1.03 Bar)
- ▶ Suction Pipe - Telescoping 15 IN. to 40 IN. x 1" NPT

PART NUMBER	DESCRIPTION	TRADE PRICE
GP110000-99	12v 57lpm 3/4" GPI M-150S-MU Transfer Pump Kit - Manual	£738.60
GP110000-100	12v 57lpm 3/4" GPI M-150S-AU Transfer Pump Kit - Automatic Nozzle	£789.25



## M-180S-MU/AU 12V 69LPM GEAR PUMP KIT - UL LISTED

The GPI M-180S fuel transfer pump features a rotary gear design and is made from durable and light weight cast aluminum. The 12-VDC motor delivers flow rates up to 69lpm. The M-180S is a GPI best-seller, providing longer run times and reliable performance year over year. The M-180S series is the pump of choice for agricultural, automotive and construction applications using gasoline, diesel fuel and kerosene. The M-180S comes with a manual/automatic leaded nozzle, fuel hose, power cord & adjustable suction pipe.

- Connecting cable – Length: 18ft (5.5m)
- Connection – Inlet - 1" NPTF / Outlet - 1" NPTF
- Dispensing Hose - Buna-N, 12ft. (3.7m) x 5/8 IN.
- Flow rate – 69 L/min
- Max Pressure – 15 PSI (1.03 Bar)
- Suction Pipe - Telescoping 15 IN. to 40 IN. x 1" NPT

PART NUMBER	DESCRIPTION	TRADE PRICE
GP110300-1	12v 69lpm 1" GPI M-180S-MU Transfer Pump Kit - Manual Nozzle	£827.46
GP110300-2	12v 69lpm 1" GPI M-180S-AU Transfer Pump Kit - Automatic Nozzle	£877.21



## M-240S-MU 24V 57LPM GEAR PUMP KIT - UL LISTED

M-240S-MU Fuel Transfer Pump, Manual Unleaded Nozzle, 15 GPM (57 L/min), 15 ft. (4.6 m) Power cord, 3/4 in. x 12 ft. (3.7 m) dispensing hose, Suction pipe. Rotary gear design reduces wear and high quality 24-VDC motor provide more operating hours for maximum value.

- Connecting cable – Length: 18ft (5.5m)
- Connection – Inlet 1" NPTF / Outlet 3/4" NPTF
- Dispensing Hose - Buna-N, 8ft. (3.7m) x 5/8 IN.
- Flow rate – 57 L/min
- Max Pressure – 15 PSI (1.03 Bar)
- Suction Pipe - Telescoping 15 IN. to 40 IN. x 1" NPT

PART NUMBER	DESCRIPTION	TRADE PRICE
GP110000-70	24v 57lpm 3/4" GPI M-240S-MU Transfer Pump Kit	POA



## M-115S-AU 115V 45LPM GEAR PUMP KIT - UL LISTED

115 Volt AC Fuel Pumps are designed for stationary locations and offers a 30 minute duty cycle from a permanent magnet motor. Comes with 12 ft. of 3/4"-inch Grounded Hose, automatic unleaded nozzle, lockable nozzle holder, dispensing hose w/static wire, telescoping suction pipe & tank adapter.

- Connecting cable – N/A
- Connection – Inlet - 1" NPTF / Outlet - 3/4" NPTF
- Dispensing Hose - Buna-N, 12ft. (3.7m) x 3/4"
- Flow rate – 45 L/min
- Max Pressure – 15 PSI (1.03 Bar)
- Suction Pipe - Telescoping 15 IN. to 40 IN. x 1" NPT

PART NUMBER	DESCRIPTION	TRADE PRICE
GP110000-82	115v 45lpm 3/4" GPI M-115S-AU Transfer Pump Kit	POA



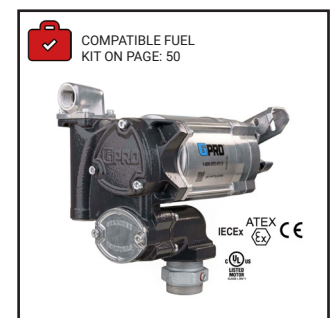
## HEAVY DUTY DC VANE PUMPS

### V20 76LPM MODULAR ATEX APPROVED PUMP IN 230V & 115V

The GPRO V20 provides professional grade performance with almost 2X the pressure output than other comparable 20 GPM pumps. It's packed with exceptional design features that extend pump life, make maintenance a breeze, and provide the best return on your investment.

- Voltage, Input: 115V (AC) 60Hz, 230V (AC) 50/60Hz
- Connection – Inlet/Outlet - 1" NPTF
- Flow rate – 20 GPM | 76 L/min
- Max Pressure – Up to 25 PSI (1.72 bar)

PART NUMBER	DESCRIPTION	TRADE PRICE
GP171000-04	110/230v, 76lpm, 1" BSP V20-230-PX-B08 Vane Pump Only	£1,309.74





## PRO35-115 230/115V 132LPM VANE PUMP - UL LISTED

Fluid Compatibility: Gasoline up to E15, Diesel up to B20, Kerosene, AVGAS, Jet A. Compatible with Hose Reel, High Pressure Pump & High Flow Rate. Available as pump only or as part of a kit with flow meter, nozzle & hose options. Factory set at 115V 60HZ and optional to wire as 230V 60HZ

- Operating Temp – -20°F TO 125°F (-29°C TO 52°C)
- Flow rate – 132 L/min
- Connection – Inlet - 1 1/4" NPTF / Outlet - 1" NPTF
- Max Pressure – 25 PSI (1.72 Bar)

PART NUMBER	DESCRIPTION	TRADE PRICE
PRO35-115*	230v/115v, 135lpm PRO35-115 - Pump Only or Kit	POA



## V25-012/24PX 12V/24V 94LPM VANE PUMP - UL LISTED & ATEX APPROVED

Quick-Fit modular design eliminate dangerous leaks. Four bolts and an O-ring quickly attach a filter, meter or both. Equipped with Safe Stop Power Down - 30 minute auto power down with easy reset, Pump 750 gallons uninterrupted, prevents misuse.

- Operating Temp – -20°F TO 125°F (-29°C TO 52°C)
- Flow rate – 94 L/min
- Connection – Inlet/Outlet - 1" NPT
- Voltage– Available in 12v & 24v

PART NUMBER	DESCRIPTION	TRADE PRICE
GP170000-04	12v, 94lpm V25-012PX Heavy Duty Vane Pump Only	£1,309.74
GP170001-04	24v, 94lpm V25-024PX Heavy Duty Vane Pump Only	£1,435.65



## G20-012PX 12V 76LPM GEAR PUMP - UL LISTED & ATEX APPROVED

The G20-012PX features a new modular design with simple 4-bolt connection points to complement our Quick-Fit accessories. Attach a filter, meter or both quickly and easily. The 12V motor delivers flow rates up to 20 GPM. Featuring a rotary gear design and powder coated die cast aluminum body to ensure a long life with minimal maintenance.

- Operating Temp – -20°F TO 125°F (-29°C TO 52°C)
- Flow rate – 76 L/min
- Connection – Inlet/Outlet - 1" NPTF
- Max Pressure – 15 PSI

PART NUMBER	DESCRIPTION	TRADE PRICE
GP162000-04	12v, 76lpm G20-012PX Gear Pump Only	£761.00
GP165100-06	M30-L8B Mechanical Meter 1" BSP/G20 Quick Fit Flange - 19-114lpm	£325.00
GP129500-01	G20 Modular Quick Fit Flange Filter Kit, Includes Filter	£129.34
GP129340-07	Replacement Filter 94.6lpm, 10 Micron, 1-3/8-12 UNF	£29.83



## POLYPROPYLENE TELESCOPIC RIGID SUCTION PIPE

Versatile telescoping design fits most standard tank sizes. Comes with a 15 inch extension pipe for larger tanks. Compatible with 1 inch inlet GPI Pumps for use with gasoline, E15, diesel, biodiesel, and kerosene.

PART NUMBER	DESCRIPTION	TRADE PRICE
GP-110241-01	Polypropylene Telescopic Suction Pipe	£43.55



## UL APPROVED COMPONENTS DISPENSING KIT

This kit has been designed to bolt on to a variety of pumps to provide a full dispensing kit of UL approved components. \*NB: suitable for This kit includes:

- Static Bonded Fuel Hose - 1" x 5.4m - **UL APPROVED**
- Automatic Nozzle - 1" NPT, 1" Spout - **UL APPROVED**
- Composite Suction Pipe - 1" NPT (15" - 40")
- Extension Suction Pipe - 14.5"
- Power Cord Kit - 18ft (5.5m) \*12/24V DC only. AC pumps should be connected by a professional.

COMPATIBILITY  
Pumps marked with:  
  
Are compatible with  
this kit.

PART NUMBER	DESCRIPTION	TRADE PRICE
GP-DISPENSINGKIT-HF	UL Approved Dispensing Kit	£587.42







We stock top quality Swiss/German made FMT pumps, which are built to withstand the most vigorous of use. Their pumps provide very small tolerances of their pumps provide for a most efficient suction and delivery performance.

## FMT 12V DC TRANSFER PUMP

The pump can be used in a mobile or stationary application, where a battery has to be used, e.g. on a construction site, in agriculture, on boats, etc. Suitable for Diesel.

- Connecting cable – Length: 3m
- Connection inlet/outlet – 1" Female
- Pump design – Vane pump, Self Priming
- Flow rate – 35lpm / 54lpm
- Max Pressure – 1.6 / 1.8 Bar
- Suction height – 3m

PART NUMBER	DESCRIPTION	TRADE PRICE
P-23-012	12v 35lpm 1" FMT Transfer Pump, 1.6 Bar - c/w Cable & Clips	£236.00
P-23-406	12v 54lpm 1" FMT Transfer Pump, 1.8 Bar - c/w Cable & Clips	POA



## FMT 24V DC TRANSFER PUMP

- Connecting cable – Length: 3m
- Connection inlet/outlet – 1" Female
- Pump design – Vane pump, Self Priming
- Flow rate – 35lpm / 54lpm
- Max Pressure – 1.6 / 1.8 Bar
- Suction height – 3m

PART NUMBER	DESCRIPTION	TRADE PRICE
P-23-405	24v 35lpm 1" FMT Transfer Pump, 1.6 Bar - c/w Cable & Clips	£250.00
P-23-407	24v 54lpm 1" FMT Transfer Pump, 1.8 Bar - c/w Cable & Clips	POA



## FMT 110V TRANSFER PUMP

The very small tolerances of this pump provide for a most efficient suction and delivery performance. Complete with integral bypass, on/off switch. thermoprotection switch.

- Connecting cable – Length: 1.8m
- Connection inlet/outlet – 1" Female
- Pump design – Vane pump, Self Priming
- Flow rate – 60lpm / 100lpm
- Max Pressure – 1.8 Bar
- Suction height – 5m

PART NUMBER	DESCRIPTION	TRADE PRICE
P-23-430-006	110v 60lpm 1" FMT Transfer Pump, 1.8 Bar	£262.75
P-23-055	110v 100lpm 1" FMT Transfer Pump, 1.8 Bar	£390.00



## FMT 230V TRANSFER PUMP

- Connecting cable – Length: 1.8m
- Connection inlet/outlet – 1" Female
- Pump design – Vane pump, Self Priming
- Flow rate – 60lpm / 100lpm
- Max Pressure – 1.8 Bar
- Suction height – 5m

PART NUMBER	DESCRIPTION	TRADE PRICE
P-23-430	230v 60lpm 1" FMT Transfer Pump, 1.8 Bar	£245.50
P-23-433	230v 100lpm 1" FMT Transfer Pump, 1.8 Bar	£348.75





SUPPLIER OF PIUSI EQUIPMENT



Since 1953, **PIUSI** is a leading player in the global fluid handling sector, with a complete range of products for fluid transferring and management: the Italian quality and engineering at the service of private operators in agriculture, the automotive industry, workshops and garages, fleet management, road and sea transport worldwide.

## PIUSI BI-PUMP 12V FUEL TRANSFER PUMP

Bipump is a diesel transfer pump, available in the 12v. As a diesel transfer pump, Bipump was created to meet the needs of those who are looking for a long-lasting quality pump, applicable to different industries such as agriculture, automotive, mining, and construction.

- Battery powered fuel transfer pump
- Flow rate: 85ltr Per Min
- 30 min duty cycle
- Available in 12v
- Cast iron pump body
- IP55 Protection grade

PART NUMBER	DESCRIPTION	TRADE PRICE
P8-F00363A0A	Piusi BiPump 12v Fuel Transfer Pump Only	POA
P8-000363010	Piusi BiPump 12v Fuel Transfer Pump c/w 2m Cable & Clips	POA
P8-00036302A	Piusi BiPump 12v Fuel Transfer Pump c/w 4m Cable & Clips	POA



## PIUSI BP3000 12 & 24V FUEL TRANSFER PUMP

BP 3000 is a self-priming electric pump for diesel transfer, available in the version BP 3000 12 V and BP 3000 Inline 24 V. With a flow rate of up to 50 l/min, the BP 3000 diesel transfer pump is a rotary pump ideal for topping up and transferring diesel from dispensers or directly from tanks installed on vehicles.

- Battery powered fuel transfer pump
- Flow rate: 50ltr Per Min
- 30 min duty cycle
- Available in 12v/24v
- Cast iron pump body with anti-corrosion paint
- IP55 Protection grade

PART NUMBER	DESCRIPTION	TRADE PRICE
P8-000342000	Piusi Bypass 3000 Vertical 12v Fuel Transfer Pump - 3/4" Push Fit	POA
P8-000732000	Piusi Bypass 3000 Vertical 24v Fuel Transfer Pump - 3/4" Push Fit	POA
P8-000357500	Piusi Bypass 3000 Horizontal 12v Fuel Transfer Pump - 3/4" F BSP	POA
P8-000358000	Piusi Bypass 3000 Horizontal 24v Fuel Transfer Pump - 3/4" F BSP	POA



## PIUSI PANTHER 56/72 FUEL TRANSFER PUMP

The Panther 56-72 diesel transfer pump is versatile and can be applied in different sectors including automotive, transport, agriculture, workshop and construction. The Panther 56-72 volumetric, rotary, self-priming vane transfer pump has a high seal and is reliable even in use at low temperatures.

- Self-priming diesel fuel transfer pump
- Flow rate: 56 / 72 ltr Per Min
- 1" F BSP inlet/outlet ports
- Available in 230v
- Cast iron pump body with anti-corrosion paint
- IP55 Protection grade

PART NUMBER	DESCRIPTION	TRADE PRICE
P8-000730000	Piusi Panther 56 Fuel Transfer Pump - 230v	POA
P8-000732000	Piusi Panther 72 Fuel Transfer Pump - 230v	POA
P8-R11276000	Piusi Pump Replacement Vane Kit for Panther 56 & 72 (All Voltages)	POA



### PIUSI VISCOMAT 70 VANE OIL TRANSFER PUMP

Viscomat Vane 70 & 90 are oil and diesel transfer pumps. The available AC version is suitable for all those applications where it is necessary to apply a transfer system with high suction capacity in order to transfer fluids with medium-high viscosity.

The high density of the oil, compared to other types of liquids, requires a greater strength in the transfer phase.

- Viscomat 90 - 50ltr Per Min
- Viscomat 70 - 25ltr Per Min
- 1" F BSP inlet/outlet
- Available in 230v
- Maximum fluid temperature of 70°C
- IP55 Protection grade

PART NUMBER	DESCRIPTION	TRADE PRICE
P8-00033414A	Piusi Viscomat Vane 70 Oil Transfer Pump - 240v	POA
P8-000303M00	Piusi Viscomat Vane 90 Oil Transfer Pump - 240v	POA

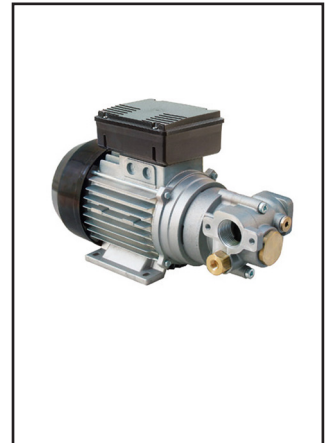


### PIUSI VISCOMAT GEAR ELECTRIC OIL TRANSFER PUMP

Viscomat Gear is an oil transfer pump, available in the single-phase and three-phase versions. The high viscosity of the lubricating oil, unlike other types of fluids, needs to be transferred with greater strength.

- Self-priming Viscomat oil transfer pump
- Flow rate: 9-14lpm
- 1" F BSP inlet/outlet
- Available in 230v / 400v
- Continuous running
- IP55 Protection grade

PART NUMBER	DESCRIPTION	TRADE PRICE
P8-000304030	Piusi Viscomat 200/2M Oil Transfer Pump - 230v   9lpm   12 Bar	POA
P8-000304300	Piusi Viscomat 230/3M Oil Transfer Pump - 230v   14lpm   12 Bar	POA
P8-000304010	Piusi Viscomat 350/2M Oil Transfer Pump - 230v   9lpm   25 Bar	POA



### PIUSI SUZZARA BLUE ELECTRIC ADBLUE PUMP

Suzzarablue Pump AC is the most popular AdBlue®/DEF transfer diaphragm pump, equipped with an electric motor without dynamic seals. This solution makes this pump for AdBlue®/DEF for industrial use. Its reliability and ease of use makes it the most suitable solution for transferring and dispensing AdBlue®/DEF.

- Suitable for AdBlue®
- Flow rate: 34ltr Per Min
- 3/4" F BSP inlet/outlet
- Available in 230v
- Duty cycle: 20 mins
- IP55 Protection grade

PART NUMBER	DESCRIPTION	TRADE PRICE
P8-000203040	Piusi Suzzara Blue Electric AdBlue® Pump	POA



### PIUSI K33 & K44 DIESEL & OIL FLOW METER

The K33 mechanical flow meters have been designed for precise measurement of the quantity of fuels dispensed for non-commercial use. Easy to calibrate and install, the K33 and K44 flow meters can monitor the quantity dispensed for a maximum flow rate of 20-120 l/min.

- Mechanical fuel flow meter
- Flow rate: 20-120ltr Per Min
- 1" F x F BSP Inlet/Outlet
- Oil version: Max viscosity of 2000 cSt
- Working temperature -20°C/+60°C

PART NUMBER	DESCRIPTION	TRADE PRICE
P8-000553000	Piusi K33 Flow Meter - Diesel	POA
P8-000553000	Piusi K33 Flow Meter - Oil	POA
P8-000563000	Piusi K44 Flow Meter - Diesel	POA
P8-000563000	Piusi K44 Flow Meter - Oil	POA



# LIQUID TRANSFER PUMP KITS

## TANK INSTALLERS PUMP KIT

Designed by Atkinson Equipment, this tank installers transfer kit is designed as for transferring fuel from one tank to the other. With various pump options available this can be tailored to suit your application.

- ▶ FMT Pump (Voltage of choice)
- ▶ x1 5m 1" Hose fitted with cam couplings
- ▶ x2 dust plugs for hoses
- ▶ x2 dust caps for hoses
- ▶ x1 10mtr 1" hose fitted with cam couplings and a y-strainer (filter)



PART NUMBER	DESCRIPTION	TRADE PRICE
TIK-1235	Tank Installers Kit w/ 12v, 35lpm Pump	£428.50
TIK-1260	Tank Installers Kit w/ 12v, 60lpm Pump	POA
TIK-1110	Tank Installers Kit w/ 110v, 60lpm Pump	£471.75
TIK-1000	Tank Installers Kit w/ 230v, 60lpm Pump	£385.50
TIK-1100	Tank Installers Kit w/ 230v, 100lpm Pump	£514.50

## PORTABLE FUEL TRANSFER PUMP KIT

Designed by Atkinson Equipment, this portable diesel transfer kit is designed as a ready to use portable refuelling pump solution for diesel dispensing from drums or small tanks to refuel vehicles. In some applications like constructions sites, agriculture or boats, a battery powered pump is the only option. This kit has a choice of voltages to suit your application.

- ▶ FMT Pump (Voltage of choice)
- ▶ Manual Nozzle – 60lpm
- ▶ All fittings included: swivel, integral bypass, non-return valve, strainer, jubilee clips, hose tails & PTFE tape
- ▶ 4.6M 3/4" single piece of hose - choice of the length of the supply/delivery on each side of the pump is left up to you. Cut according to your own application.



PART NUMBER	DESCRIPTION	TRADE PRICE
P-23-012-KIT	12v DC - 35lpm Battery Powered Portable Pump Kit	£315.75
P-23-008-KIT	12v DC - 60lpm Battery Powered Portable Pump Kit	POA
P-23-430-006-KIT	110v - 60lpm Mains Powered Portable Pump Kit	£357.25
P-23-034-KIT	230v - 60lpm Mains Powered Portable Pump Kit	£295.00
P-23-036-KIT	230v - 100lpm Mains Powered Portable Pump Kit	£398.50

## ATKINSON FUELBOX

The Atkinson Fuel Box has been developed to add value to a popular industry refuelling product. The Swiss self-priming pump and flowmeter have a 3-year return to supplier warrantee. As well as the unique 3-year warrantee, the Atkinson Fuel Box incorporates its own automatic on/off switch so that when the nozzle is taken out of its holster the pump automatically switches on and when the nozzle is replaced the pump automatically switches off (just like a garage forecourt pump).

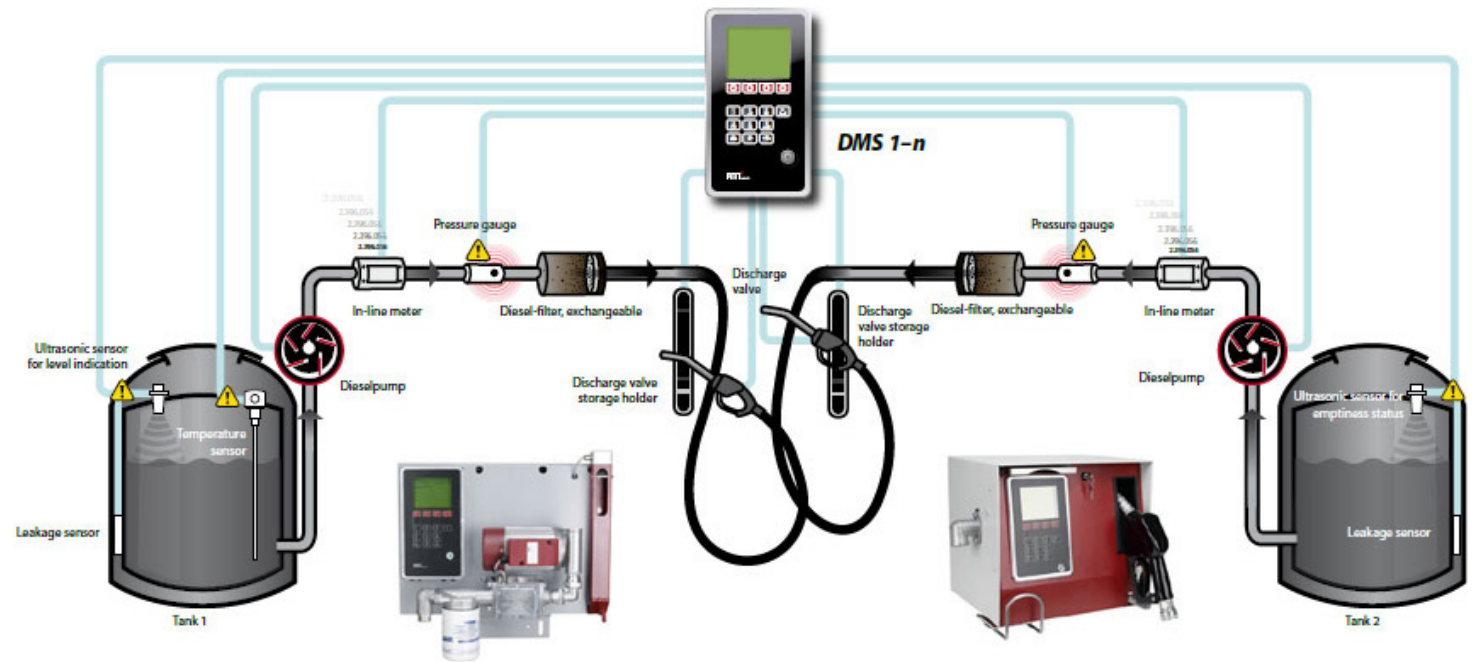
- ▶ FMT Pump (Voltage of choice)
- ▶ Flow Rate – 35 or 60lpm
- ▶ Hose – 4m of 3/4" Delivery Hose
- ▶ Nozzle – Automatic Shut Off
- ▶ Flow Meter – 3 Digit Batch, 6 Digit Cumulative
- ▶ Warranty – 3 years manufacturers



PART NUMBER	DESCRIPTION	TRADE PRICE
FB-12	12v - Fuel Dispensing Box 35lpm c/w 4mtrs Hose + Auto Nozzle	£753.00
FB-24	24v - Fuel Dispensing Box 35lpm c/w 4mtrs Hose + Auto Nozzle	£758.00
FB-110	110v - Fuel Dispensing Box 60lpm c/w 4mtrs Hose + Auto Nozzle	£792.00
FB-230	230v - Fuel Dispensing Box 60lpm c/w 4mtrs Hose + Auto Nozzle	£730.00
FB-PED	Fuel Box Pedestal	POA
FB-13-KIT	Quick Coupling - Tube & Screws	£253.50
FB-11	Quick Coupling Adaptor	£18.95



**WHAT IS A DIESEL MANAGEMENT SYSTEM?** - Diesel management systems are designed to monitor and control fuel consumption within your fleet. They accurately measure and track fuel inventories and how fuel is dispensed. This information is then stored in systems and reported to the manager through the use of web portals to provide this useful data. See below installation example of the FMT Diesel Management Systems:



## DMS DISPENSING BOX

All in one diesel dispensing kit, includes; 60lpm pump, filter, 6m hose, automatic nozzle.  
Available in 230v 60lpm or 100lpm

- FMT Pump (P-23-430)
- In-line meter NUMERlxx<sup>3</sup>, three digits
- Automatic nozzle valve with swivel joint
- On/Off switch through control valve
- Discharge hose, 6 m, DN 19, G 1" male, G 1" female
- Foot valve with filter



PART NUMBER	DESCRIPTION	TRADE PRICE
P-23-513-100	FMT Diesel Dispensing Box - 230v, 60lpm	£2,600
P-23-423	FMT Diesel Dispensing Box - 230v, 100lpm	POA

## DMS ISLAND PUMP

All in one diesel dispensing island pump kit, includes; 60lpm pump & filter. Hose & nozzle available as extras or as part of the DMS Island kit. Available in 230v 60lpm or 100lpm

- FMT Pump (P-23-430)
- In-line meter NUMERlxx<sup>3</sup>, three digits
- Automatic nozzle valve with swivel joint
- On/Off switch through control valve
- Discharge hose, 6 m, DN 19, G 1" male, G 1" female
- Foot valve with filter

PART NUMBER	DESCRIPTION	TRADE PRICE
P-23-370	FMT Diesel Dispensing Island Pump Only - 230v, 60lpm	POA
P-23-372	FMT Diesel Dispensing Island Pump Only - 230v, 100lpm	POA
P-23-371	MT DMS Dispensing Island Pump w/ 6m Hose & Nozzle - 230v, 60lpm	POA
P-23-372	FMT DMS Dispensing Island Pump w/ 6m Hose & Nozzle - 230v, 100lpm	POA
P-23-209	MT Replacement Canister Filter for FMT Pumps	POA
P-23-069	MT DMS I-Buttons, Black, 10 Per Pack	£150.00



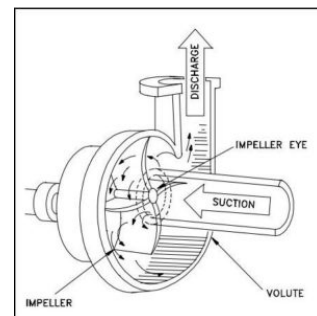


Pedrollo are an Italian pump manufacturer who have been making pumps and motors in San Bonifacio since 1974 and are now globally recognised as a leading manufacturer in the water pumps industry. The extensive ranges of Pedrollo pumps cover most agricultural, domestic and industrial applications and are constantly evolving to remain some of the most efficient available.

## CENTRIFUGAL PUMPS

Any pump that utilises centrifugal force to create a large amount of pressure in fluid is a centrifugal pump. This results in a pumping action. The easiest way to imagine is water being flicked up off of a car tyre on a wet road. Rather than like most pumps utilising a scooping action created by the vanes or blades on the impeller, a centrifugal pump pumps from the centrifugal force.

Centrifugal pumps can pump continuously at high flow rates and at a very high pressure. Consequently making the centrifugal pump cost effective and reliable. We have a wide range of centrifugal pumps ranging from standard, medium flow to high flow.



## SELF PRIMING / LIQUID RING PUMPS

A self-priming centrifugal pump is a solution to pumps becoming air-bound when air gets into the pump. It does this by mixing air with water to create a fluid that can be pumped and has similar properties to regular water. The pump gets rid of the air and pumps the water, just like a standard centrifugal pump.

These pumps are different than a standard centrifugal pump as it has a built-in water reservoir into the unit which allows it to rid pump and suction line of air by recirculating the water in the pump on the priming cycle. The water reservoir can be located above or in front of the impeller. Either way the self-priming ability of the pump comes from the pump's ability to keep the water after it first primes.

When the pump is priming, the air enters the pump and mixes with the water in the impeller. The air and water are transferred together by centrifugal action of the impeller into the water reservoir. Consequently the air naturally rises and the water sinks.



Now that the water is free of air it is heavier than air-laden water. It flows by gravity back down to the impeller chamber which is then mixed with more air being transferred through the suction line. Once all of the air has been removed and vacuum created in the suction line, the atmospheric pressure forces water into the suction line towards the impeller and begins pumping.



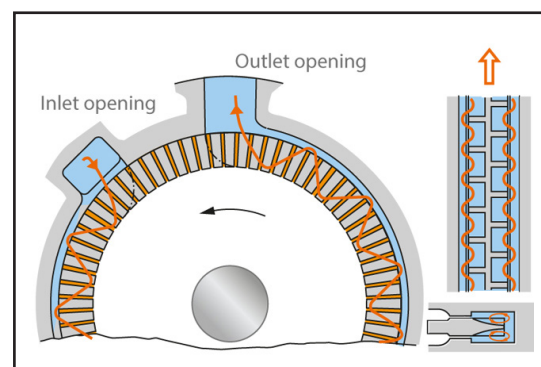
The water within the pump stops recirculating and it begins pumping. The next time the pump starts it will 'self-prime'. It will be able to mix the air and water in the casing to create fluid that is pump-able. The pump's prime will be complete and will begin pumping again.



## PERIPHERAL PUMPS

Peripheral pumps have an impeller which has a large amount of small, radial double-flow vanes arranged at its periphery. This impeller then rotates in a large concentric casing channel with an outlet and inlet opening. As the fluid circulates repeatedly between the impeller and the casing channel the energy transferred to it is extremely high.

The fluid transfers along the circumference, from the inlet to the outlet of the casing increasing the pressure. Between the outlet is an arranged stripper. The inlet then prevents a hydraulic short circuit between the high-pressure and the low pressure side of the casing channel. Peripheral pumps are often designed as close-coupled pumps. This is because of the large increase in energy, they can be small in size.



## PEDROLLO CP132A CENTRIFUGAL TRANSFER PUMP

Suitable for use with clean water and liquids that are not chemically aggressive towards the materials from which the pump is made. As a result of their reliability and the fact that they are easy to use, these pumps are widely used in domestic and civil applications such as the distribution of water in combination with small and medium sized pressure sets, for transferring liquids and for the irrigation of gardens and allotments.

- Flow rate up to 160 L/min (59.6 m³/hr)
- Available in 230v & 400v
- Dynamic head up to 58m
- Temperature (min/max) -10 °C to +90 °C



PART NUMBER	DESCRIPTION	TRADE PRICE
P3224	230v Single Phase CPM132A Pedrollo Centrifugal Pump - 1" BSP	£475.64
P3241	400v Three Phase CP132A Pedrollo Centrifugal Pump - 1"	£528.21

## PEDROLLO HF50A MEDIUM FLOW CENTRIFUGAL TRANSFER PUMP

The high efficiency and continuous duty capabilities makes these pumps ideal for use in activities such as flood and spray irrigation, drawing water from lakes, rivers and wells, or for any number of different industrial applications where the characteristics of high flow rates and mid to low head are required. The pump should be installed in an enclosed environment, or at least sheltered from inclement weather.

- Flow rate up to 600 l/min (36,0 m³/hr)
- Available in Single Phase 230v & Three Phase 400v
- Head up to 39 m
- Temperature (min/max) -10 °C to +90 °C



PART NUMBER	DESCRIPTION	TRADE PRICE
P3490-1	30v Single Phase HFM50A Pedrollo Medium Flow Centrifugal Pump - 1 1/2" BSP	£573.08
P3490-3	400v Three Phase HF50A Pedrollo Medium Flow Centrifugal Pump - 2"	£632.05

## PEDROLLO CK50/80 SELF PRIMING TRANSFER PUMP

Suitable for use with diesel, clean water that does not contain abrasive particles and liquids that are not chemically aggressive towards the materials from which the pump is made. As a specific result of the pump's operating principle they are suitable for use in all situations where a compact self-priming pump is required or where the fluid supply is limited, irregular or contains air.

- Flow rate up to 50 l/min (3,0 m³/h)
- Available in Single Phase 230v & Three Phase 400v
- Head up to 51 m
- Temperature (min/max) -10 °C to +90 °C



PART NUMBER	DESCRIPTION	TRADE PRICE
P3150-1	230v Single Phase CKM50 Pedrollo Self Priming Pump - 3/4" BSP	£582.05
P3150-3	400v Three Phase CK50 Pedrollo Self Priming Pump - 3/4" BSP	£629.49
P3150-1BP	230v Single Phase CKM50BP Pedrollo Self Priming Pump w/ Internal By-Pass - 3/4" BSP	£687.18
P3180	230v Single Phase CKM80 Pedrollo Self Priming Pump - 1" BSP	£815.38
P3180-3	400v Three Phase CK80 Pedrollo Self Priming Pump - 1" BSP	£860.26

## PEDROLLO 2-5CR TRANSFER PUMP

Suitable for use with clean water and liquids that are not chemically aggressive towards the materials from which the pump is made. As a result of their quietness, these pumps are widely used in domestic applications such as the distribution of water in combination with small and medium sized pressure sets, and for the irrigation of gardens and allotments, etc.

- Flow rate up to 130 l/min (7,8 m³/h)
- Available in Single Phase 230v
- Head up to 67 m
- Temperature of the liquid from -10 °C to +40 °C



PART NUMBER	DESCRIPTION	TRADE PRICE
P3330	230v Single Phase 3CRM80 Pedrollo Stainless Steel Multi-Stage Pump - 1" BSP / 70lpm	£667.95
P3340	230v Single Phase 4CRM80 Pedrollo Stainless Steel Multi-Stage Pump - 1" BSP / 80lpm	£714.10
P3350	230v Single Phase 3CRM100 Pedrollo Stainless Steel Multi-Stage Pump - 1" BSP / 110lpm	£847.44

## PEDROLLO PK60/65/100 PERIPHERAL END SUCTION TRANSFER PUMP

Suitable for use with clean water that does not contain abrasive particles and liquids that are not chemically aggressive towards the materials from which the pump is made. Thanks to their reliability, the fact that they are easy to use and are economical, they are ideal for domestic use and in particular for distributing water in combination with small pressure sets and for the irrigation of gardens and allotments.

- Flow rate up to 90 l/min (5,4 m³/h)
- Head up to 100 m
- Available in Single Phase 230v & Three Phase 400v
- Temperature of the liquid from -10 °C to +60 °C



PART NUMBER	DESCRIPTION	TRADE PRICE
P3300	230v Single Phase PKM60 Pedrollo Peripheral Pump - 1" BSP / 5-40lpm	£280.77
P3310	230v Single Phase PKM65 Pedrollo Peripheral Pump - 1" BSP / 5-50lpm	£361.54
P3320	230v Single Phase PKM100 Pedrollo Peripheral Pump - 1" BSP / 5-70lpm	£860.26

## SUBMERSIBLE PUMPS

### PEDROLLO TOP SUBMERSIBLE TRANSFER PUMP

The TOP series of clear water drainage pumps is recommended for emergency draining of small flooded areas, rooms, cellars, garages, the disposal of waste water in the home and for emptying drainage traps. Supplied with 10mtrs electric cable and hose connector. Will drain down to 14mm level.

- Flow rate up to 360 l/min (21,6 m³/h)
- Head up to 14,50 m
- Available in Single Phase 230v
- Temperature of the liquid to +40 °C



PART NUMBER	DESCRIPTION	TRADE PRICE
P3360	230v TOP 1 Pedrollo Submersible Pump - 20-140lpm	£408.97
P3370	230v TOP 2 Pedrollo Submersible Pump - 20-220lpm	£438.46
P3380	230v TOP 3 Pedrollo Submersible Pump - 20-260lpm	£494.87
P3390	230v TOP 4 Pedrollo Submersible Pump - 20-320lpm	£714.10
P3400	230v TOP 5 Pedrollo Submersible Pump - 20-400lpm	£473.59

### ECONOMY LOW VOLTAGE SUBMERSIBLE PUMP

Used to pump small volumes of liquid from one tank to the other. Suitable for diesel, kerosene & water. Body size is 140mm x 40mm. This submersible pump can easily be connected to a standard garden hose and dropped into the tank to pump out the water from the bottom of your tank.

- Flow rate up to 32lpm
- Available in 12v DC



PART NUMBER	DESCRIPTION	TRADE PRICE
P3900	12v DC Amazon Submersible Pump - 18lpm	£99.95

## GROZ WATER BLOCK/PARTICULATE FUEL TANK FILTER

A range of Fuel Filters to suit different types of fuels in agricultural & industrial applications. Durable & light-weight design for easy installation on mobile & stationary fuel tanks and on gasoline & diesel fuel pumps. This comes complete with a water-block 10 micron element and a replacement water block & particulate filter element is available, as is a 10 micron particulate only version.

- Connection size – 1" BSP Threaded
- Replacement available – Particulate Only Element or Water + Particulate Element
- Suitable for – Diesel, Bio Diesel, Petrol & Kerosene



PART NUMBER	DESCRIPTION	TRADE PRICE
GFH3579-W	Groz Water-Block & Particulate Filter - Complete Unit	£45.75
GFH3579-P-ELMNT	Replacement Particulate Only Filter Element - 10 Micron	£10.25
GFH3579-W-ELMNT-GSK	Replacement Water-Block & Particulate Filter Element - 10 Micron	£12.95

## GOLDENROD WATER BLOCK/PARTICULATE FUEL TANK FILTER - 95LPM

Important note: These are genuine Golden Rod Filters & Elements and are not 'grey imports/forgeries'. For removing microscopic particles (15 microns) of rust, sand, dirt, scale and lint. 366 sq. inches of filter surface for efficient action. Unit works well by itself where water is not a problem, or in combination with the water block fuel filter for added protection from water in the fuel.

- Connection size – 1" BSP Threaded
- Maximum flow rate of 95 Ltrs Per Min
- Suitable for – Diesel, Bio Diesel, Petrol & Kerosene



PART NUMBER	DESCRIPTION	TRADE PRICE
GFH3590	Goldenrod Particulate Only Filter - Complete Unit - 15 Micron	£112.00
GFH3590-W	Goldenrod Water-Block & Particulate Filter - Complete Unit - 15 Micron	£124.25
GFH3579-W-ELMNT-GSK	Replacement Water-Block & Particulate Filter Element - 10 Micron	£12.95

## GILBARCO PARTICULATE ONLY FUEL TANK FILTER - 50LPM

This Pumped Filter System, up to 50 lpm, comprises a 'head' that is permanently fitted inline with replaceable 'elements' that are removed and disposed of once spent (similar to a car filter). The 'head' and the 'filter elements' are sold separately. This is a particulate filter only and does not eliminate water if present in the oil. Tip: It is often a good idea to purchase a spare filter element to keep on the shelf ready to replace.

- Connection size – 1" BSP, 1" UNF Nose
- Maximum flow rate of 50 Ltrs Per Min
- Suitable for – Diesel, Bio Diesel, Petrol & Kerosene



PART NUMBER	DESCRIPTION	TRADE PRICE
GFH3581-A	Aluminium Head - For 1" BSPF Inlet/Outlet Filters, 1" UNF Nose	£12.95
GFH3580	Gilbarco 10 Micron Particulate Only - 50lpm	£11.25

## FILTER BOWL STROP

Boa Constrictor wrenches are ideal for securely handling, tightening, and loosening a range of objects like fuel filters, pipes, and hose fittings. Featuring a non-marking strap for delicate finishes and non-slip, soft grips for a comfortable and secure hold, these wrenches empower you to confidently tackle tasks needing a strong and flexible grip.

PART NUMBER	DESCRIPTION	TRADE PRICE
BOA-12001B	Filter Strap Wrench – 160mm (6 3/4") - Suits most sized filter bowls	£11.60
BOA-DUALCASE	Two Piece Filter Strap Wrench Set (Standard Wrench – 160mm (6 3/4")) (Baby Wrench – 100mm (4"))	£14.25



## GPI WATER-BLOCK / PARTICULATE FUEL TANK FILTER - 67LPM

This Pumped Filter System, up to 67 lpm, comprises a 'head' that is permanently fitted inline with replaceable 'elements' that are removed and disposed of once spent (similar to a car filter). The 'head' and the 'filter elements' are sold separately. Versions of the element are often available containing Hydrosorb powder that absorbs and eliminates any water contained in the diesel.

- Connection size – 1" BSP, 1" UNF Nose
- Maximum flow rate of 67 Ltrs Per Min
- Suitable for – Diesel



PART NUMBER	DESCRIPTION	TRADE PRICE
GFH3581-A	Aluminium Head - For 1" BSPF Inlet/Outlet Filters, 1" UNF Nose	£13.25
GP129300-01	GPI 10 Micron Particulate Only Pumped Filter Element - 67lpm	£23.25
GP129300-02	GPI 10 Micron Water & Particulate Pumped Filter Element - 67lpm	£33.00

## CIM-TEK WATER-BLOCK / PARTICULATE FUEL TANK FILTER FOR BIO-DIESEL - 95LPM

This Pumped Filter System, up to 95 lpm, comprises a 'head' that is permanently fitted inline with replaceable 'elements' that are removed and disposed of once spent (similar to a car filter). The 'head' and the 'filter elements' are sold separately. Particulate filter only. Tip: It is often a good idea to purchase an additional filter to keep on the shelf ready to replace a spent element.

- Connection size – 1" BSP, 1" UNF Nose
- Maximum flow rate of 95 Ltrs Per Min
- Suitable for – Diesel, Bio Diesel



PART NUMBER	DESCRIPTION	TRADE PRICE
GFH3581-A	Aluminium Head - For 1" BSPF Inlet/Outlet Filters, 1" UNF Nose	£13.25
GP129340-04	Cim-Tek 2 Micron Water & Particulate Pumped Filter Element - 95lpm	£67.50

## GPI WATER-BLOCK / PARTICULATE FUEL TANK FILTER - 150LPM

This Pumped Filter System, up to 150 lpm, comprises a 'head' that is permanently fitted inline with replaceable 'elements' that are removed and disposed of once spent (similar to a car filter). The 'head' and the 'filter elements' are sold separately. Tip: Do ensure you select the correct head and element according to the flow type/ rate/ requirement of your particular system.

- Connection size – 1" BSP, 1" UNF Nose
- Maximum flow rate of 150 Ltrs Per Min
- Suitable for – Diesel, Bio Diesel



PART NUMBER	DESCRIPTION	TRADE PRICE
GP906005-67	Aluminium Head - For 1" NPT Inlet/Outlet Filters, 1.5" UNF Nose	£71.50
GP129320-02	GPI 10 Micron Water & Particulate Pumped Filter Element - 113lpm	£77.75
GP129340-05	Cim-Tek 2 Micron Water & Particulate Pumped Filter Element for Bio Diesel - 150lpm	£108.75
MF1616N-MM-B	1inNPT*1inBSPT M/M EQUAL CONNECTOR BRASS	£31.50

## GUILIANI ANELLO PARTICULATE FUEL TANK FILTER

Giuliani Anello is an Italian manufacturer who have produced these high quality inline heating oil filters for over 50 years. Strainer filter for diesel, fuel oil and air with aluminium cover and bowl. General purpose metal bowled filters for use with fluids not aggressive to the filter's component materials.

- Connection size – 1" BSP Threaded
- Maximum temperature: 90°C
- Suitable for – diesel, fuel oil and air




PART NUMBER	DESCRIPTION	TRADE PRICE
M5080	1" 100 Micron Inline Metal Bowled Filter	£82.95
M5080-RF	Replacement 100 Micron Stainless Steel Filter Element	£28.25



## REPLACEMENT VANES

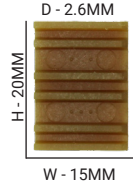
Vane pumps have a rotor and vanes which slide in and out, they are self priming due to the contact between the vanes and pump housing. The vanes are therefore subject to normal wear which can be increased by the presence of debris or excess dry running, causing them to snap and temporarily jam. They are designed to be serviceable items and replaced when necessary. See below for a list of vanes and other spares relating to the FMT pumps;

There are a few different types of vanes that go into the FMT pumps depending on their voltage and flow rate, also some pumps only need 5 vanes whereas others will need 6. The age of your pump will also be a factor to consider, due to a new style of vane for newer style pumps. These are easy to differentiate by their colour and shape, see below to help identify what vane set you require.




**NEW STYLE - FOR USE WITH:**  
 230V, 60LPM (P-23-430/23-100)  
 110V, 60LPM (P-23-054)  
**X6 VANES REQUIRED**

PART NUMBER:	P-89-254
TRADE PRICE:	£5.25 Per Vane



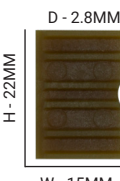
**OLD STYLE - FOR USE WITH:**  
 230V, 60LPM (P-23-034  
 BEFORE 2010)  
**X6 VANES REQUIRED**

PART NUMBER:	P-89-254-OLD
TRADE PRICE:	£6.95 Per Vane



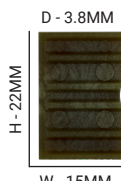
**FOR USE WITH:**  
 230V, 100LPM (P-23-102)  
 110V, 100LPM (P-23-055)  
**X6 VANES REQUIRED**

PART NUMBER:	P-89-304
TRADE PRICE:	£5.25 Per Vane



**FOR USE WITH:**  
 12V, 35LPM (P-23-012)  
**X5 VANES REQUIRED**

PART NUMBER:	P-89-429
TRADE PRICE:	£5.25 Per Vane



**FOR USE WITH:**  
 12V, 60LPM (P-23-406)  
**X5 VANES REQUIRED**

PART NUMBER:	P-89-398
TRADE PRICE:	£5.25 Per Vane

## OTHER FMT SPARES

PART NUMBER	DESCRIPTION	TRADE PRICE
P-82-673-878	FMT NBR O-Ring 62 x 1.5mm - 60lpm Pump	£1.65
P-82-515-878	FMT Ring Gasket - Split Design - 60lpm Pump	£9.50
P-23-988	FMT Pump Bypass Assembly	£5.50
P-00-208	FMT 230V Red Rocker Switch for Pump	£17.50
P-23-209	FMT Canister Filter 30mic + Water 1.5" F Thread	£59.00
P-23-298	FMT Flow Meter Counter Assembly	£46.75
P-82-661	FMT O-Ring - 72 X1.5 - 23-102/23-433 100lpm Pump Only	£17.50
P-82-521	FMT O'Ring Gasket Split Design for 23-102 - 100lpm Pump Only	£7.10
P-84-432	Cover Ring Gasket Split Design for 23-433 - 100lpm Pump Only	£7.10
P-85-358	FMT Cone Seat Nipple, 1" M-M, C/W O-ring	£6.25
P-23-218	FMT Cone Seat Union to 1" BSP to suit P-85-358	£14.90
P-23-069	FMT DMS I-Buttons, Black, 10 Per Pack	£137.00
P-82-357	O-ring for P-23-192 Flowmeter	£4.90

 P-23-209	 P-23-298
 P-82-661	 P-82-515
 P-00-208	 P-23-988

## FM/ATEX APPROVED SENSOR KIT

The Factory Mutual (FM and ATEX) Approved Sensor is designed for use with any G2 Turbine Meter when rotor pulse data is required and the meter is located within a hazardous location.

- ▶ The output signal is compatible with existing FLOMEC® remote electronics. Use on G2 "Turbine Only" model.
- ▶ This kit includes pickup, screws, cover plate and jam nut.



PART NUMBER	DESCRIPTION	TRADE PRICE
GP120077-01	GPI FM Approved Sensor Kit	£545.00
GPGP120077-02	GPI ATEX Approved Sensor Kit	£545.00
GP113524-01	GPI Connector Kit for FM/ATEX Approved Sensor Kit	£74.00

## 30M CABLE KITS FOR REMOTE KITS

Extended length cables for Output Module and Remote Kits, the standard length provided with the units is 3m. Ideal for applications that require longer distances between the meter and display.

- ▶ Output Cable Kit, 30m for Conditioned Signal Output Module. 3 Core.
- ▶ Remote Cable Kit, 30m for Standard and FM Approved Remote Kits. 2 Core.

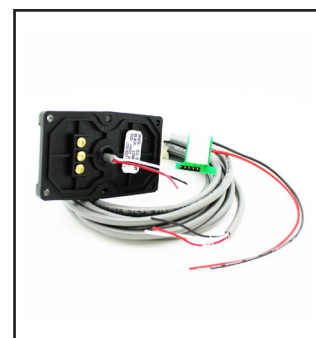
PART NUMBER	DESCRIPTION	TRADE PRICE
GP125066-500	GPI Remote Cable Kit (100ft) Belden #9501 - 2 Conductor	£165.00
GP113272-500	GPI Remote Cable Kit (100ft) Belden #9363 - 3 Conductor	£100.00



## PULSE ACCESS MODULE

The Pulse Access Module provides an unscaled, digital signal from your GPI meter by accessing circuitry from the on-board computer readout. This kit comes complete, ready to install, with a circuit assembly, coverplate assembly and 10 ft. of cable. The Pulse Access Module requires both a GPI Turbine and an 09/Q9 Computer Electronics which are sold separately. Use with G2 Meters Only.

- ▶ Provides a digital Open Collector signal.
- ▶ Operating temperature range of +14° F to +140° F (-10° C to +60° C)
- ▶ Can transmit signal up to 5,000 ft.
- ▶ Communicates with most digital process control devices and its easy to install.



PART NUMBER	DESCRIPTION	TRADE PRICE
GP125060-10	GPI Pulse Out/Ext Power/Scaled Pulse Module - For Q9 Display	£245.00
GP125060-1	GPI Pulse Out/Ext Power/Scaled Pulse Module - For 09 Display	£155.00

## 4-20MA MODULE FOR G2

Combine the 4-20 mA Module with an Industrial Grade Turbine and Display Electronics to provide an industry standard analog signal for connection to a wide variety of chart recorders, display equipment and process control equipment. This module outputs an analog signal which is directly proportional to the frequency of the digital output. With some simple adjustments, you can scale the module to represent whatever range is desired (minimum range of 75Hz). Kit comes with circuit, assembly, enclosure and screws.

- ▶ Voltage: 7 to 30 V (dc)
- ▶ Cable: 10 ft. (3 m), Belden #9363



PART NUMBER	DESCRIPTION	TRADE PRICE
GP125100-10	GPI 4-20mA Module Assembly - For Q9 Display	£515.00
GP125100-1	GPI 4-20mA Module Assembly - For 09 Display	£545.00

## TWIN LITHIUM BATTERIES

Replacement battery kit for G2 & A1 flow meters with 09 displays.  
Please note – these will have to be shipped via courier due to Royal Mail restrictions.

PART NUMBER	DESCRIPTION	TRADE PRICE
GP113520-1	GPI Twin Lithium Battery Replacement Kit	£57.00



## Q9 METER DISPLAY

The Q9 is the latest version of the popular FLOMEC computer display. It incorporates many of the most requested features over the years including low battery indication and the ability to display custom units with a name label. Optional plug-in daughterboards for 4-20mA, scaled pulse, and external power supply are easily added as original equipment or as a retrofit in the field. All of the daughterboard parameters are addressable through the two buttons on the Q9 display. An additional new feature is the ability to display velocity as well as rate and totals.

Packaged in the same form as the familiar 09 display, the Q9 operates on two AAA batteries with approximately 2 years of operation and maintains all of the same intrinsically safe approvals of past products.



PART NUMBER	DESCRIPTION	TRADE PRICE
	Q9 Computer Display Only	POA

## CONDUIT ADAPTER KIT

The Conduit Adapter allows you to enclose wiring from the magnetic pickup. The kit includes a turbine meter cover with a 1 inch male NPT conduit fitting and screws for plastic or metal installation.

PART NUMBER	DESCRIPTION	TRADE PRICE
GP113437-01	GPI Conduit Adaptor Kit	£110.00



## CONDITIONED SIGNAL OUTPUT MODULE

This module provides an unscaled, amplified, digital signal capable of transmission up to 5,000 ft. There is no need for additional signal conditioning or amplification devices to achieve the desired digital signal. Use on G2 "Turbine Only" model. The module is factory assembled for Open Collector signal output and operates from an external 9 to 35 volt power source.

- Connection: Three wire
- Connector: Hubble PG7
- Frequency: 0 to 750 Hz
- Signal Type: Open Collector (NPN)
- Power: External 9 to 35 V (dc), approximately 1 mA



PART NUMBER	DESCRIPTION	TRADE PRICE
GP113435-10	GPI Conditioned Signal Output Module - For Q9 Display	£418.00
GP113435-1	GPI Conditioned Signal Output Module - For 09 Display	£418.00

## FM APPROVED REMOTE KIT ASSEMBLY

The Factory Mutual (FM) Approved Remote Kit Assembly modifies FLOMEC® Electronic Digital Meters for applications in specialized situations including remote indication and high or low fluid temperature metering applications. This kit provides the versatility of panel mounting of the LCD readout up to 100 ft. (30 m) from the turbine.

- Magnetic Pickup: 1.3 k Ohm, 90
- Signal Type: Sine Wave
- Cable: 10 ft. (3 m)
- Voltage: Peak to Peak 10 mV to 500 mV
- Frequency: 11 to 750 Hz

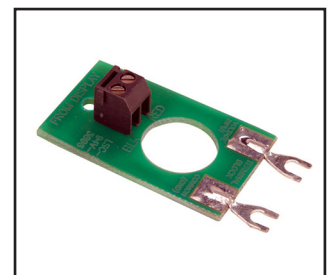


PART NUMBER	DESCRIPTION	TRADE PRICE
GP113275-10	GPI FM Approved Remote Kit Assembly - For Q9 Display	£380.00
GP113275-1	GPI FM Approved Remote Kit Assembly - For 09 Display	£380.00

## EXTERNAL POWER MODULE

Combine the External Power Module and the GPI Pulse Access Module to provide external power capabilities to a GPI Electronic Digital Meter. The module is designed to provide regulated power to the Computer Electronics. The batteries then become a backup or auxiliary power source. If desired, a pulse output may be accessed. The unscaled, digital signal is capable of transmission up to 5,000 ft. Voltage: 7 to 30 V (dc) @ 1 mA

PART NUMBER	DESCRIPTION	TRADE PRICE
GP125070-1	GPI External Power Module - 7 - 30v DC	£143.00



## AdBlue / DEF Equipment



Easily dispense AdBlue (DEF) from drums or IBCs with our range of manual and electric pump solutions. Designed for efficient transfer from storage to vehicle, our products ensure clean, reliable performance every time.



## ADBLUE DIAPHRAGM PUMP

We offer the full range of AdBlue transfer pumps with all voltages from 12v, 24v, 230v, 110v.  
Suitable for the transfer of AdBlue/Urea.  
We can supply these pumps individually or as part of various kits.

- Connection size – 1" BSP, 1" UNF Nose
- Maximum flow rate of 30 Ltrs Per Min
- Suitable for – AdBlue
- Available in 12v, 24v, 110, & 230v



PART NUMBER	DESCRIPTION	TRADE PRICE
AB23030	AdBlue Electric Diaphragm Pump - 230v	£225.75
AB01230	AdBlue Electric Diaphragm Pump - 12v	£225.75
AB02430	AdBlue Electric Diaphragm Pump - 24v	£225.75
AB11030	AdBlue Electric Diaphragm Pump - 110v	£225.75

## ADBLUE IBC PUMP KITS - AUTOMATIC OR MANUAL

Self priming diaphragm pump mounted on an IBC hanging plate. The pump comes complete with 4m of delivery hose and 1m of suction hose, including SEC adaptor for IBC connection. These pumps are available with automatic or manual nozzle and has the option of adding an inline digital flow meter. Kit contains: 32plm self priming diaphragm pump, mounting plate, 4m delivery hose, 1m suction hose, choice of manual or automatic nozzle & SEC adaptor for IBC connection.

- Connection size – 1" BSP, 1" UNF Nose
- Maximum flow rate of 30 Ltrs Per Min
- Choice of Manual or Automatic nozzle
- Available in 12v, 24v, 110, & 230v

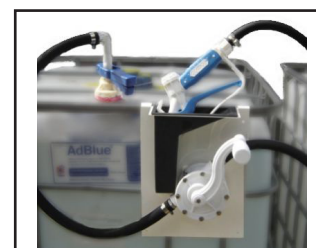


PART NUMBER	DESCRIPTION	TRADE PRICE
AB-IBC1000	AdBlue IBC Pump Kit - Manual Nozzle, 230v	£367.50
AB-IBC1000-F	AdBlue IBC Pump Kit - Manual Nozzle, 230v C/W Flow Meter	£559.00
AB-IBC1000-12	AdBlue IBC Pump Kit - Manual Nozzle, 12v	£367.50
AB-IBC1000-12-F	AdBlue IBC Pump Kit - Manual Nozzle, 12v C/W Flow Meter	£559.00
AB-IBC1000-24	AdBlue IBC Pump Kit - Manual Nozzle, 24v	£367.50
AB-IBC1000-24-F	AdBlue IBC Pump Kit - Manual Nozzle, 24v C/W Flow Meter	£599.00
AB-IBC1000-110	AdBlue IBC Pump Kit - Manual Nozzle, 110v	£367.50
AB-IBC1000-110-F	AdBlue IBC Pump Kit - Manual Nozzle, v C/W Flow Meter	£559.00
AB-IBC2000	AdBlue IBC Pump Kit - Automatic Nozzle, 230v	£506.00
AB-IBC2000-F	AdBlue IBC Pump Kit - Automatic Nozzle, 230v C/W Flow Meter	£678.00
AB-IBC2000-12	AdBlue IBC Pump Kit - Automatic Nozzle, 12v	£506.00
AB-IBC2000-12-F	AdBlue IBC Pump Kit - Automatic Nozzle, 12v C/W Flow Meter	£678.00
AB-IBC2000-24	AdBlue IBC Pump Kit - Automatic Nozzle, 24v	£506.00
AB-IBC2000-24-F	AdBlue IBC Pump Kit - Automatic Nozzle, 24v C/W Flow Meter	£678.00
AB-IBC2000-110	AdBlue IBC Pump Kit - Automatic Nozzle, 110v	£506.00
AB-IBC2000-110-F	AdBlue IBC Pump Kit - Automatic Nozzle, v C/W Flow Meter	£678.00

## ADBLUE IBC ROTARY HAND PUMP KIT

A rotary hand pump suitable for dispensing adblue, on a panel plate for mounting on an IBC. The system is an Adblue hand pump mounted on a sturdy hanging IBC plate. Kit includes 1m suction pipe with SEC connector, 4m delivery hose, nozzle holster & manual nozzle.

- Delivery Hose - 3/4" Polipo
- Maximum flow rate 21 Ltrs Per Min
- Suction Hose - 3/4" PVC
- Pump Material - Plastic Polypropylene



PART NUMBER	DESCRIPTION	TRADE PRICE
AB-IBC-RHP	IBC Plate Mounted Rotary Hand Pump	£233.00



## ADBLUE IBC GRAVITY HOSE KIT

This IBC gravity feed kit is perfect accessory pumping AdBlue from your IBC. This IBC gravity hose kit is supplied in a range of hose lengths and is complete with a Manual Nozzle, Cam Fittings and an Adaptor for connecting to an IBC outlet ball valve.

- ▶ 3m, 4m and 5m hose lengths available
- ▶ 3/4" manual nozzle with S/S spout
- ▶ Suitable for – AdBlue
- ▶ Cam fittings and and adaptor or IBC connection



PART NUMBER	DESCRIPTION	TRADE PRICE
GFH3000-IBC-AB	IBC Gravity Feed Hose Kit - 3m	£77.75
GFH4000-IBC-AB	IBC Gravity Feed Hose Kit - 4m	£82.75
GFH5000-IBC-AB	IBC Gravity Feed Hose Kit - 5m	£87.75

## PIUSI ROTARY HAND PUMP FOR ADBLUE

The Piusi AdBlue™ Hand Pump is a premium, manual rotary model specially designed for the transfer of AdBlue™ (DEF) from a drum, where there is no access to power.

PART NUMBER	DESCRIPTION	TRADE PRICE
P8-F00332A00	Premium Piusi Rotary Hand Pump for Adblue - Drum Adaptor	£240.00
P8-F00332A20	Premium Piusi Rotary Hand Pump for Adblue - c/w Hoses and Drum Adaptor	£330.00



## ROTARY HAND PUMP FOR ADBLUE

This rotary hand pump for AdBlue, is a cost effective way of transferring AdBlue from a drum. Often used when only low volumes are being dispensed and power is not available for an electric pump.

PART NUMBER	DESCRIPTION	TRADE PRICE
AB-RHP-1000	Rotary Hand Pump for AdBlue w/ Telescopic Suction Tube	£75.75



## LEVER HAND PUMP FOR ADBLUE

This lever hand pump for AdBlue, is a cost effective way of transferring AdBlue from a drum. Often used when only low volumes are being dispensed and power is not available for an electric pump.

PART NUMBER	DESCRIPTION	TRADE PRICE
AB-CM0500	AdBlue Lever Hand Pump - c/w Suction & Hose	£43.50
AB-CM2100-A	2" BSP Adaptor to 2" Butress Male Thread (Plastic Drums)	£7.95



## ROTARY HAND PUMP FOR ADBLUE

This kit comprises of the AdBlue rotary hand pump with telescopic suction pipe, dispensing hose, drum adaptor and stainless steel spout.

PART NUMBER	DESCRIPTION	TRADE PRICE
AB-RHP-KIT	Rotary Hand Pump for AdBlue w/ Telescopic Suction Tube	£130.00



## ADBLUE NOZZLES

### 3/4" ADBLUE MANUAL NOZZLE

Suitable for use with AdBlue. Plastic Polypropylene bodied manual nozzle with stainless steel spout. 3/4" Hosetail connection and viton seals to protect against aggressive fluids.

PART NUMBER	DESCRIPTION	TRADE PRICE
TN6000-AB	Manual 3/4" AdBlue Nozzle	£43.00
TN7000-AB	Manual 3/4" AdBlue Nozzle w/ Blue Soft Grip	£44.50



**3/4" ADBLUE AUTOMATIC NOZZLE**

100% compatible with Adblue. Stainless steel body and spout, with a max flow rate of 40lpm. Also can be used with solvents and corrosive mediums.

PART NUMBER	DESCRIPTION	TRADE PRICE
M3700-ABSS	AdBlue 3/4" BSPF Stainless Steel Nozzle	£209.25

**3/4" HOSETAIL ADBLUE AUTOMATIC NOZZLE - PLASTIC BODY**

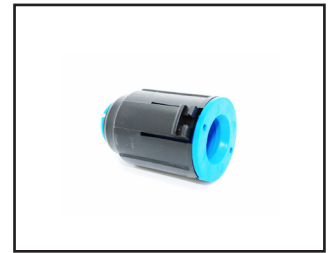
100% compatible with Adblue. Plastic body and S/S spout, with a max flow rate of 40lpm. Also can be used with solvents and corrosive mediums.

PART NUMBER	DESCRIPTION	TRADE PRICE
M3700-AB	AdBlue 3/4" Hosetail Plastic Nozzle - 5-40lpm	£103.50

**ADBLUE NOZZLE ACTUATION MAGNET**

Magnet actuator for stainless steel nozzles for Adblue dispensing. When used in conjunction with an Adblue nozzle which is fitted with a magnetic spout, the collar prevents your AdBlue dispensing pump from being able to dispense DEF/AdBlue into anything other than the AdBlue tank.

PART NUMBER	DESCRIPTION	TRADE PRICE
M3700-ABSS- MAGNET	Automatic Dispensing Nozzle Actuation Magnet	£71.95

**ADBLUE FLOW METERS****GPI ECONOMY WATER FLOW METER**

Sturdy, small and simple Electronic Digital Water Meter with solid nylon housing, complete meter including turbine assembly, microprocessor and LCD readout. Works well on any pump or gravity feed system with at least 3-30 GPM (10-100lpm) flow range.

PART NUMBER	DESCRIPTION	TRADE PRICE
GP113255-6	GPI 01N52LM 1" Nylon Flow Meter - 100lpm	£277.50

**PIUSI K24 ADBLUE METER**

Digital Turbine Meter, compact easy readable display. Display can be rotated in 4 different positions.

- ▶ Counter - 5 Digit Partial and 6 Digit Totaliser
- ▶ Connections - 1" M BSP Inlet/Outlet c/w Socket
- ▶ Accuracy - +/- 1%
- ▶ Display - LCD electronic display (2 x AAA batteries)
- ▶ Flow Rate - 6-100ltrs Per Min
- ▶ Pressure - 10 Bar / 145 PSI
- ▶ Max Working Temperature - -10°C / +50°C
- ▶ Fluid Viscosity - 2.5 - 3.5 CST



PART NUMBER	DESCRIPTION	TRADE PRICE
P8-F0040710A	1" BSP Male Piusi K24 AdBlue Flow Meter	£223.75

**ADBLUE HOSE****ADBLUE COMPATIBLE HOSE 3/4"**

3/4" diameter soft PVC hose with Polyurethane underlayer with polyester yarn reinforcement and PU adhesive middle layer, for pressurized transfer oil, diesel oil, blue diesel and urea.

- ▶ Outer Diameter for 3/4" - 26mm
- ▶ Working Pressure for 3/4" - 15 Bar
- ▶ Burst Pressure - 45 Bar



PART NUMBER	DESCRIPTION	TRADE PRICE
GFH3550-POL	3/4" AdBlue Delivery Hose - Per Meter	£6.75
GFH3550-AB	3/4" AdBlue Suction Hose - Per Meter	£6.75
GFH3550-PVC	3/4" AdBlue Blue PVC Hose - Per Meter	£6.50

# DRY BREAK COUPLINGS

WHAT IS A DRYBREAK COUPLING? - A dry break coupling (also called a dry connect or a dry disconnect coupling) is a fitting that features an automatic mechanism to seal off both ends of a line when the hose is disconnected. On disconnection both the hose and tank units close automatically and spill free disconnection is achieved.

Drybreak couplings can be used most applications where the transfer where fluids are hazardous, toxic, corrosive or flammable. This off course includes bulk fluid transfer application such as loading and unloading of tank truck, rail road, special boats, bunkering and also you can use in Paint and Ink Industries.

## ATKINSON DRYBREAK COUPLING - 2"

The Atkinson dry break coupling for AdBlue is designed to open and close automatically when the delivery hose is connected and disconnected. The valve insures minimum liquid loss on disconnection even if connected or disconnected whilst filling is in progress.

- 2" BSP Female Thread
- EPDM Seal
- For Tanks up to 10,000 Litres
- 304 Stainless Steel
- 10 Bar Working Pressure



PART NUMBER	DESCRIPTION	TRADE PRICE
DBC-1000	Dry Break Coupling 2" Stainless Steel	£230.00
DBC-DUSTCOVER	Dust Cover for DBC-1000	£12.90
MF3232-MM-S	2" Stainless Steel Male Nipple	£15.25
MF3232-MF-90-S	2" Stainless Steel Male - Female 90 degree	£41.50
MF3232-FF-90-S	2" Stainless Steel Female - Female 90 degree	£35.25
MF3232-FF-45-S	2" Stainless Steel Female - Female 45 degree	£25.90

## TODO-MATIC DRYBREAK COUPLING TANK UNIT - 3"

119mm TODO Tank Unit 3 BSP Fm St/St c/w Viton Seal for safe fluid handling. Designed for safe and easy with minimum operator intervention. TODO-MATIC couplings offer an unbeatable combination of technical, safety and performance features.

- Valves open and close automatically on connection and disconnection
- Reduces spillages to virtually zero
- Simple single action operation, no levers or switches to operate



PART NUMBER	DESCRIPTION	TRADE PRICE
DB-5531X-4407	TODO 3" BSP Female Tank Unit	£766.00

## TODO-MATIC DRYBREAK COUPLING HOSE UNIT - 2"

70mm TODO Hose Unit 2 BSP Fm St/St c/w Viton seals for safe fluid handling. Designed for safe and easy with minimum operator intervention. TODO-MATIC couplings offer an unbeatable combination of technical, safety and performance features.

- Valves open and close automatically on connection and disconnection
- Reduces spillages to virtually zero
- Simple single action operation, no levers or switches to operate



PART NUMBER	DESCRIPTION	TRADE PRICE
DB-9200G-4407	TODO 2" BSP Female Hose Unit	£1,682.00

## TODO-MATIC DRYBREAK COUPLING HOSE UNIT - 3"

119mm TODO Hose Unit 3 BSP Fm St/St c/w Viton seal for safe fluid handling. Designed for safe and easy with minimum operator intervention. TODO-MATIC couplings offer an unbeatable combination of technical, safety and performance features.

- Valves open and close automatically on connection and disconnection
- Reduces spillages to virtually zero
- Simple single action operation, no levers or switches to operate



PART NUMBER	DESCRIPTION	TRADE PRICE
DB-9300G-4407	TODO 3" BSP Female Hose Unit	£2,774.00

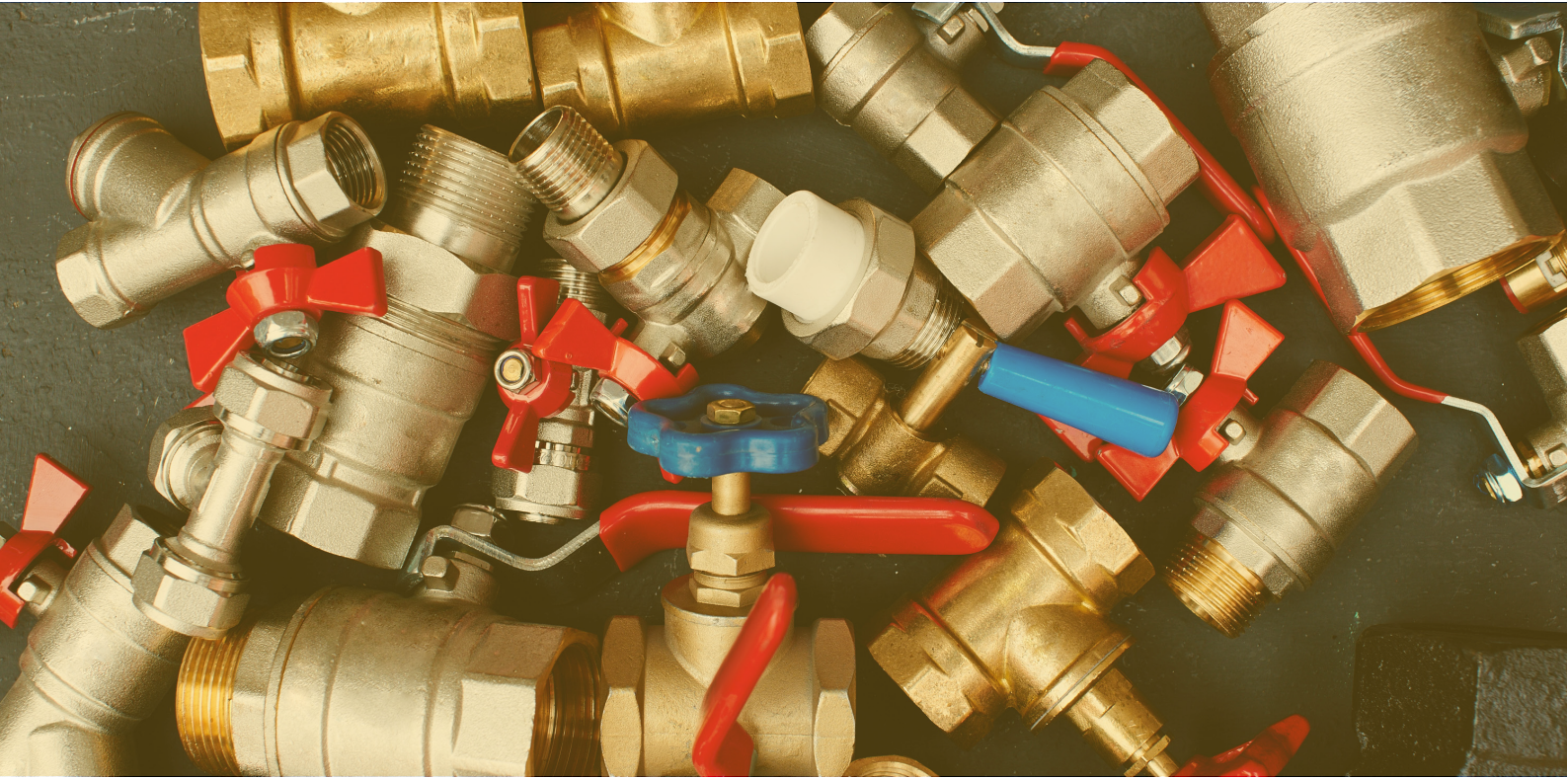
We stock a wide range of AdBlue fittings, including hose tails, swivel joints, non return valves, and adaptors to suit your application and installation.

PART NUMBER	DESCRIPTION	TRADE PRICE
GV3934-SS	3/4" Non Return Valve - Stainless	£108.75
GV3934-FO	3/4" Non Return Valve - Strainer Only	£3.75
M3700-ABSS-BR1BSP	Breakaway Swivel, S/S - 1"F - 3/4"M BSP	£91.75
M3700-ABSS-BR3/4BSP	Breakaway Swivel, S/S - 3/4"F - 3/4"M BSP	£91.75
M3700-ABSS-SW07TAIL	Swivel Hose Tail, 3/4"M - 19mm Hose Barb	£23.50
AB230-PP-TAIL	Plastic Hosetail 3/4" to 1" BSPM	£12.75
AB230-PP-90	90 Degree 1"M to 1"F Threaded Coller	£7.25
AB230-PP-MM	1" M - M Adaptor	£4.55
P8-F16073000	1" Female to Female Adaptor Stainless Steel	£20.75
AB230-PP-90-FF	1" 90 Degree Elbow with "O" Rings	£8.25
AB-IBC-SEC	IBC Suction Coupling SEC/CDS	£26.75
AB-IBC-SUCTION	SEC/CDS IBC Suction Pipe & Connection for SEC Coupling	£28.95
AB230-PP-F-TAIL	AdBlue Polypropylene Hose Tail 1" BSPF Collar, 3/4" Tail	£7.50

	
AB230-PP-F-TAIL	GV3934-SS
	
AB230-PP-MM	MF3232-FF-90-S
	
AB-IBC-SEC	MF3232-MM-S



## Pipe & Miscellaneous Fittings



This section contains pipe fittings, gate and ball valves and other miscellaneous spares.



## PRESSURE RELIEF VALVES

### ADJUSTABLE NYLON BODY

A pressure relief valve is a valve used to control or limit the pressure in a system, which can build up due to a process upset, instrument or equipment failure. The pressure is relieved by allowing the fluid to escape through the valve and then through an auxiliary passage out of the system back into the supply tank.

- Inlet - 3/4" NPT Male Thread    ➤ Outlet - 3/4" NPT Female Thread    ➤ Max Working Temperature - 60°C
- Pressure Range - 0-14 Bar / 0-203 PSI    ➤ Max Working Pressure - 17 Bar / 246 PSI



PART NUMBER	DESCRIPTION	TRADE PRICE
GV3924	3/4" NPT Nylon Bodied Pressure Relief Valve	£55.50
GV3924-PP	3/4" BSP M/M, 60°C Max, PP Body, Viton Seal, SS Spring, 10 Bar Pressure Relief Valve	£72.50

### ADJUSTABLE BRONZE BODY

A pressure relief valve is a valve used to control or limit the pressure in a system, which can build up due to a process upset, instrument or equipment failure. The pressure is relieved by allowing the fluid to escape through the valve and then through an auxiliary passage out of the system back into the supply tank.

- Inlet - 3/4" NPT Male Thread    ➤ Outlet - 3/4" NPT Female Thread    ➤ Max Working Temperature - 80°C
- Pressure Range - 0-27.5 Bar / 0-203 PSI    ➤ Max Working Pressure - 27 Bar / 400 PSI



PART NUMBER	DESCRIPTION	TRADE PRICE
GV3924-30	3/4" NPT Bronze Bodied Pressure Relief Valve - Recommend Higher Pressures Only	£160.50
MF1212N-FM-B	3/4" NPT Female to 3/4" BSP Male Hex Adaptor - Brass	£18.75
MF1212N-MF-B	3/4" NPT Male to 3/4" BSP Female Hex Adaptor - Brass	£18.75

## GLUES & THREAD SEALING

### HELDITE & BONDLOC

There are various products that are used for sealing the threads when screwing fuel products together – this depends to some degree on the size of the thread and the strength of the bond required.

We carry a number of sealants from Bondloc in 250 ml containers (complete with spout) such as B243 Nutloc (medium strength) and B270 Threadloc (high strength).

We can supply Heldite, Bondloc and PTFE tape in convenient sizes.



PART NUMBER	DESCRIPTION	TRADE PRICE
M5001	Heldite - General Purpose Sealant, 7ml	£3.25
M5005	Heldite - General Purpose Sealant, 125ml	£16.75
M5010	Heldite - General Purpose Sealant, 250ml	£26.25
M2370	Bondloc B243 Nutloc - Medium Strength Sealant, 250ml	£64.25
M2355	Bondloc B270 Threadloc, High Strength Sealant, 250ml	£64.25
M5020	Roll of PTFE Tape	£0.85

## BALL VALVES & GATE VALVES

### T HANDLE BALL VALVE

2024-1980, 1" BSPP Ball valve F/F

T-Handle Red

PART NUMBER	DESCRIPTION	TRADE PRICE
GV3645-TF	1" T Handle Ball Valve	£16.75



# BALL VALVES & GATE VALVES

## LEVER BALL VALVES - F/F BSP

BSP Female to Female ports, plated brass body and vinyl coated on/off lever. These are available in all sizes. All those listed are British Gas approved for use in gas systems.



PART NUMBER	DESCRIPTION	TRADE PRICE
GV3641	1/4" F/F BSP Lever Ball Valves	£6.25
GV3643	1/2" F/F BSP Lever Ball Valves	£8.25
GV3644	3/4" F/F BSP Lever Ball Valves	£10.50
GV3645	1" F/F BSP Lever Ball Valves	£16.95
GV3660	2" F/F BSP Lever Ball Valves	£61.50
SG2091	1/4" Micro Ball Valve - M/F	£6.05
SG2091-04-FF	1/4" Micro Ball Valve - F/F	£7.25

## GATE VALVES

BSP Female to Female ports, brass body and painted steel on/off handwheel. These are available in several sizes. A 1" Control Valve is also available (the handwheel can be orientated to face towards you, rather than being on the top, with the outlet facing straight down).



PART NUMBER	DESCRIPTION	TRADE PRICE
GV3530	1" BSP F/F Brass Gate Valve w/ Painted Steel On/Off Wheel	£31.25
GV3640	1" BSP F/F Brass Gate Valve c/w Locking Bracket	£26.25

## MISCELLANEOUS PIPE FITTINGS

### EQUAL NIPPLES - M/M - MALLEABLE IRON

PART NUMBER	DESCRIPTION	TRADE PRICE
MF1616-MM	1" M/M Equal Nipple - Malleable Iron	£3.25
MF3232-MM	2" M/M Equal Nipple - Malleable Iron	£12.50

### EQUAL NIPPLES - M/M - BRASS

TL6010	1/4" M/M Equal Nipple - Brass	£3.75
MF1616-MM-B	1" M/M Equal Nipple - Brass	£3.95
MF1616N-MM-B	1inNPT*1inBSPT M/M EQUAL CONNECTOR BRASS	£31.25

### EQUAL NIPPLES - M/M - 316 STAINLESS STEEL

MF3232-MM-S	2" M/M Equal Nipple - 316 Stainless Steel	£14.95
-------------	---	--------

### REDUCING NIPPLES - M/M - MALLEABLE IRON

MF1612-MM	1" to 3/4" M/M Reducing Nipple - Malleable Iron	£4.50
-----------	---	-------

### REDUCING NIPPLES M/M - BRASS

MF0604-MM-B	3/8" to 1/4" M/M Reducing Nipple - Brass	£4.50
MF1612-MM-B	1" to 3/4" M/M Reducing Nipple - Brass	£12.50

### REDUCING BUSHES - M/F - MALLEABLE IRON

MF1208-MF	3/4" to 1/2" M/F Reducing Bush - Malleable Iron	£2.75
MF1608-MF	1" - 1/2" M/F Reducing Bush - Malleable Iron	£3.85
MF1612-MF	1" to 3/4" M/F Reducing Bush - Malleable Iron	£3.85

**REDUCING BUSHES - M/F - BRASS**

PART NUMBER	DESCRIPTION	TRADE PRICE
MF1208-MF-B	3/4" to 1/2" M/F Reducing Bush - Brass	£2.95
MF1612-MF-B	1" to 3/4" M/F Reducing Bush - Brass	£5.50

**EQUAL 90° ELBOWS - F/F - MALLEABLE IRON**

MF1616-FF-90	1" F/F Equal 90° Elbow - Malleable Iron	£2.55
--------------	---	-------

**EQUAL 90° ELBOWS - M/F - MALLEABLE IRON**

GFH3525	1" M/F Equal 90° Elbow - Malleable Iron	£4.25
MF3232-MF-90	2" M/F Equal 90° Elbow - Malleable Iron	£18.75

**EQUAL 90° ELBOWS - M/F - 316 STAINLESS STEEL**

MF3232-MF-90-S	2" M/F Equal 90° Elbow - 316 S/S	£39.50
----------------	----------------------------------	--------

**EQUAL 45° ELBOWS - F/F - 316 STAINLESS STEEL**

MF3232-FF-45-S	2" F/F Equal 45° Elbow - 316 S/S	£24.75
----------------	----------------------------------	--------

**COMPRESSION FITTINGS**

PART NUMBER	DESCRIPTION	TRADE PRICE
GFH3541	10mm - 8mm Straight Compression	£4.50
MF101010-CCC-B	10mm T (10x10x10) Compression	£4.75
GFH3530	10mm - 10mm Straight Compression	£4.50
MF1004-CM-90-B	10mm - 1/4" 90° Compression	£4.50
MF1008-CM-B	10mm - 1/2" Straight Compression	£4.50
MF1006-CM-B	10mm - 3/8" Straight Compression	£4.75
GFH3540	3/8" - 15mm Straight Compression	£4.50
MFM1010-MM-90B	10mm - 10mm 90° Compression	£4.50
GV3770	2" BSP F/F Brass Gate Valve w/ Painted Steel On/Off Wheel	£51.75
GV3640	1" BSP F/F Brass Gate Valve c/w Locking Bracket	£28.90
GFH3530	1" Gate valve with 1" nipple attached	£4.90

**Apply for a Trade Account**

Atkinson Equipment have been a manufacturer and supplier into the fuel and heating industry for over 50 years. We supply to stockists, resellers, & installers all over the UK who receive credit terms & specific discount based on their buying quantities. If you are looking to resale any of our products, open a trade account with us today.

**Benefits of being a Trade Customer**

- Credit Account - 30 day payment terms
- Marketing Material
- Trade Pricing
- Stockholding & Call-off
- Direct to Customer Shipping
- Technical Advice
- Export Services
- Product Testing



Link to open a trade account



**Atkinson Equipment Ltd**  
Moat Road, West Wilts Trading Estate  
Westbury,  
Wiltshire BA13 4JF

**Tel:** 01373 822220  
**Email:** [sales@atkinsonequipment.com](mailto:sales@atkinsonequipment.com)  
**Web:** [www.atkinsonequipment.com](http://www.atkinsonequipment.com)



Link to digital  
price list



Link to open a  
trade account